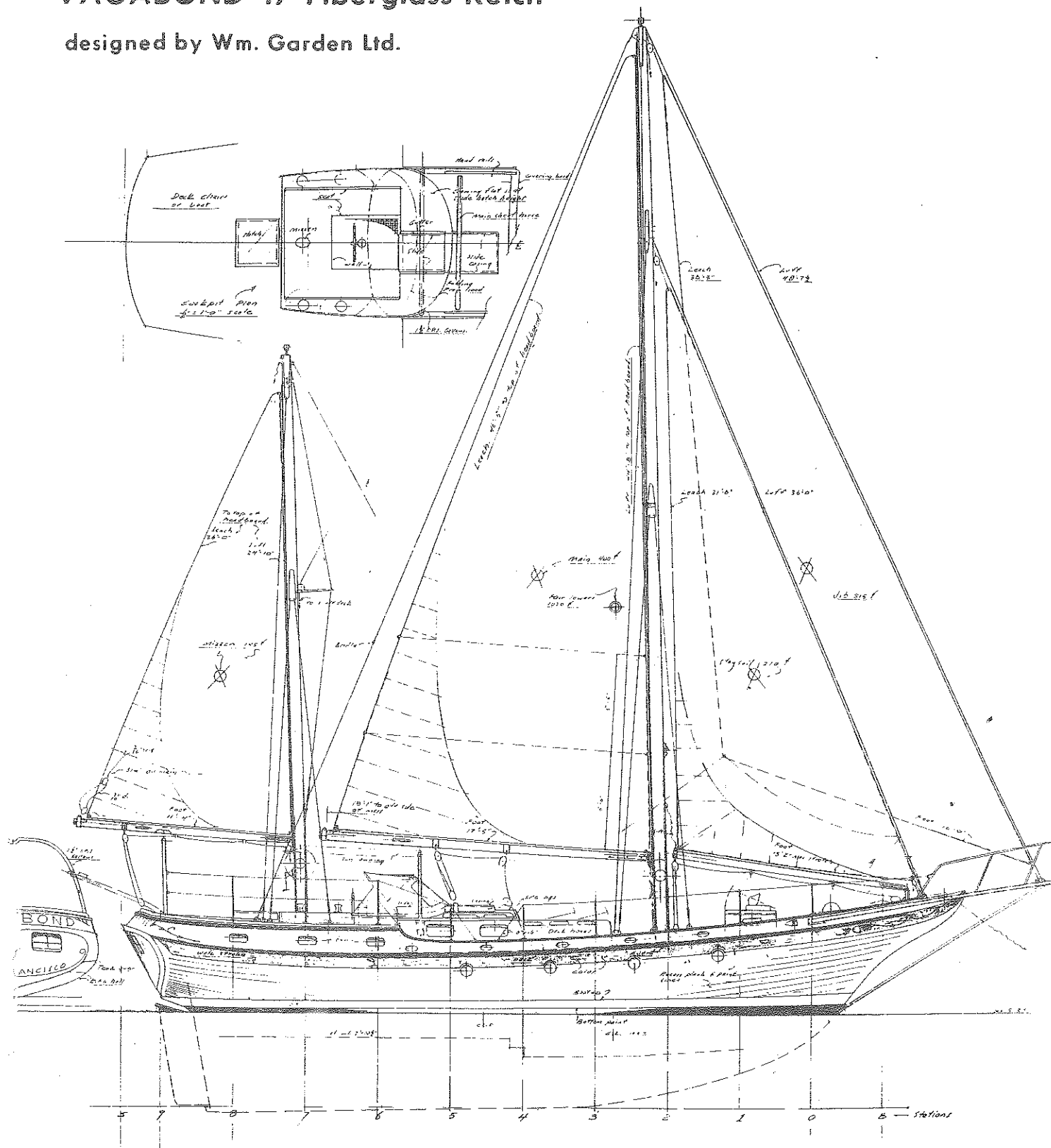


VAGABOND 47 Fiberglass Ketch

designed by Wm. Garden Ltd.



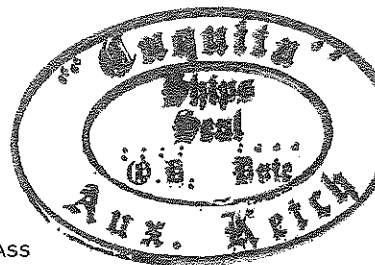
Bluewater Yacht Builders Ltd.

TAIPEI TAIWAN R.O.C.

VAGABOND 47

BLUEWATER CRUISING KETCH AND LIVE-ABOARDER IN FIBERGLASS

A WILLIAM GARDEN N.A., DESIGN



DESIGN NOTES

WORLD FAMOUS NAVAL ARCHITECT, WILLIAM GARDEN, IS BEST KNOWN FOR HIS CRUISING DESIGNS, AND DESERVEDLY SO. VAGABOND TYPIFIES HIS CONCEPT OF THE PROPER CRUISING YACHT.

AN IDEAL SIZE FOR DISTANCE CRUISING, SHE CAN BE HANDLED BY ONE EXPERIENCED HAND AND SHE WILL COMFORTABLY ACCOMMODATE SIX OR EIGHT INDEFINITELY FOR EXTENDED VOYAGES. SHE IS A REAL SHIP, OF TWENTY TONS DISPLACEMENT, ABLE TO STOW AN IMMENSE SUPPLY OF STORES, FUEL AND WATER (UP TO 5 TONS) WITHOUT APPEARING HALF SUNK AND WITH BREADTH AND DECK SPACE FOR COMFORT AND MINIMUM ANGLE OF HEEL ON PASSAGE.

TWO DECK AND SEVERAL ACCOMMODATION PLANS ARE AVAILABLE — A MIDSHIP COCKPIT LOW PROFILE WITH HIGH COAMINGS, WITH OPTIONAL BOLT ON DECKHOUSE FOR NORTHERN LATITUDES.

VAGABOND IS BUILT TO GIBBS & COX, A.B.S., BUREAU VERITAS AND LLOYDS STANDARDS FOR FIBERGLASS YACHTS IN THE FAR EAST UNDER CLOSE AMERICAN TECHNICAL SUPERVISION. A.B.S. CERTIFICATION IS AVAILABLE.

HER LINES SHOW A POWERFUL SAILING HULL WITH FINE ENTRY, STRONG SHOULDERS AND A CLEAN RUN. BILL GARDEN HAS BEEN GRADUALLY EVOLVING THIS GENERAL SHAPE FOR MANY YEARS, AND SHE HAS PROVEN HER PEDIGREE WITH HER PERFORMANCE.

VAGABOND REALLY SAILS ... FULL AND BYE IN A LUMP OF A SEA BROAD REACHING AND RUNNING OFF BEFORE IT WITH COMPLETE CONTROL AND NO TENDENCY TO BROACH STAYS ON HER FEET AND IS EASY ON HER PEOPLE IN ALL WEATHER. SHE MOVES COMFORTABLY AND ECONOMICALLY AT EIGHT KNOTS PLUS UNDER POWER GIVING A RANGE OF 1200 N.M. WITH STANDARD TANKS. A FAVOURABLE SAIL AREA TO WETTED SURFACE RATIO ASSURES GOOD LIGHT AIR PERFORMANCE. HER SHALLOW DRAFT ALLOWS HER TO CRUISE THE EUROPEAN WATERWAYS, THE BAHAMAS AND THE MANY SHALLOW PASSES TO REMOTE LAGOONS IN THE SOUTH SEAS.

THE UNDERBODY PROVIDES PLENTY OF LATERAL PLANE, MODERATELY CUTAWAY FORE-FOOT, AND A WELL PROTECTED AND EFFICIENT RUDDER AND PROPELLER. THE LONG KEEL PROVIDES STABILITY DOWNWIDE, AND ITS WIDE BOTTOM ALLOWS HER TO STAND EASILY ON A FALLING TIDE FOR PAINTING AND/OR REPAIRS AND PERMITS HAULING ON PRIMITIVE RAILWAYS WITHOUT PROBLEMS.

DESIGN NOTES (CONT)

THE VAGABOND 47 IS A FULL DISPLACEMENT YACHT WITH GOOD BEAM AND GREAT COMFORT IN PORT AND AT SEA. SHE HAS ACCOMMODATIONS FOR EIGHT (8), BUT CAN BE SAILED BY TWO (2).

WITH STANDARD SUPPLIED EQUIPMENT, THE VAGABOND 47 PROVIDES A HOME THAT CAN BE SAILED ANYWHERE....BY A RETIRED COUPLE....A FAMILY OF SIX.....OR A PARTY OF TWELVE IN THE CHARTER VERSION.

GENERAL

EXCELLENT VISIBILITY SEATED AT THE HELM UNDER POWER OR SAIL, AT SEA OR INLAND WATERS.

STEADINESS WITH 12,000 LBS. OF BALLAST AND 40,000 LBS. DISPLACEMENT SHE HAS A 30% DISPLACEMENT/BALLAST RATIO AND WILL SAIL OR POWER SMOOTHLY AND EASILY IN ANY WEATHER.

5'3" — 5'6" DRAFT FOR THE EUROPEAN CANALS AND THE MORE BEAUTIFUL AND REMOTE OF THE SOUTH SEA ATOLLS.

PERFORMANCE

AN EXTREMELY ABLE, SEA-KINDLY HULL WITH A GENTLE MOTION AT SEA. THE WEIGHT HAS BEEN KEPT OUT OF HER ENDS. THE DESIGN WAS INSPIRED BY IRVING JOHNSON'S "YANKEE II", BY SPARKMAN AND STEVENS, AND THE HISCOCK'S "WANDERER IV".

DON'T EXPECT HER TO BEAT TO WINDWARD IN SHORT STEEP SEAS LIKE A RACING MACHINE, BUT SAIL HER A GOOD FULL AND SHE'LL MAKE SPEED. REACHING FROM CLOSE TO BROAD SHE'LL MAKE EXCELLENT BOAT SPEED WHILST KEEPING HER CREW DRY AND COMFORTABLE.

UNDER POWER SHE MANEUVERS LIKE A TUG BOAT. SHE CRUISES AT EIGHT (8) KNOTS AT 2200 RPMS., QUIETLY, WITH A RANGE OF 1000-1500 N. MILES.

COMPARE VAGABOND WITH THE PROFUSION OF RECENTLY INTRODUCED CENTER-COCKPIT CRUISING AUXILIARIES. FOR LONG-SHORE CRUISING AND GENERAL PUTTERING ABOUT IN MODERATE WEATHER, THESE ROOMY, LIGHTLY-BUILT BOATS ARE FINE AND REPRESENT A HEALTHY TREND IN THE CRUISING YACHT MARKET. BUT...IF YOU'RE EVER "CAUGHT-OUT", OR IF YOU REALLY INTEND TO LIVE ABOARD AND CRUISE GREAT DISTANCES, TAKE A LONG, HARD LOOK AT THE POTENTIAL PROBLEMS OF QUICK, CHOPPY MOTION, FRAGILE GEAR, LIGHT CONSTRUCTION AND EXCESSIVELY FLAT SHOAL HULL SECTIONS WHICH GENERALLY CHARACTERIZE THESE BOATS.....VAGABOND IS OF THE CAPE HORN BREED.....SHE IS ALSO ABOUT TWICE AS MUCH SHIP. HER DISPLACEMENT, DETAILING AND GENERAL HULL FORM, POWER, RIG, GEAR, CONSTRUCTION AND FINISH WOULD MAKE HER PROHIBITIVELY EXPENSIVE TO BUILD IN THE UNITED STATES OR EUROPE.

PERFORMANCE (CONT)

VAGABOND IS ASTONISHING VALUE AT TODAY'S YACHT PRICES... TWENTY TONS OF QUALITY SHIP. THE STANDARD EQUIPMENT INCLUDES 85 HP DIESEL OR PERKINS, FOUR (4) DACRON SAILS, AND SUPERB ALL-TEAK JOINERY THROUGHOUT. THE FACT THAT OVER 150 OF THESE YACHTS ARE CRUISING THE SEVEN SEAS, IS SOME INDICATION OF HER APPEAL TO KNOWLEDGEABLE CRUISING MEN.

GENERAL SPECIFICATIONS

L.O.A.	46'-7"	14.5 m.
L.W.L.	36'-0"	11.0 m.
DISPLACEMENT	40,000 LBS.	22 m.t.
BALLAST, IRON (ENCAPSULATED INSIDE HULL)	12,000 LBS.	
BEAM	13'-5"	4.1 m.
DRAFT (LIGHT 38,000 LBS.)	5'-3"	1.75 m.
DRAFT, (LOADED 44,000 LBS.)	5'-6"	

STRUCTURAL

HULL: ONE PIECE HEAVY MOLDED FIBERGLASS HULL USING APPROVED POLYESTER RESINS, FERRO (USA) GELCOATS AND BUILT TO THE NEW A.B.S. (AMERICAN BUREAU OF SHIPPING) AND LLOYDS YACHT STANDARDS. THE HULL IS: 1/2" THICKNESS AT DECK; 3/4" THICKNESS AT WATER LINE; AND 1-1/8" THICKNESS AT KEEL.

DECK: ONE PIECE FULLY MOLDED F.R.P. DECK WITH 8" BULWARKS FORWARD OF POOP DECK FOR SAFE FOOTHOLD AT SEA. THE DECK IS BOLTED THROUGH INTEGRAL GLASS HULL FLANGE WITH S.S. BOLTS AND SEALED WITH DUPONT SEALANT.

BALLAST

12,000 LBS. CAST IRON ENCAPSULATED IN HULL AND GLASSED OVER.

TIMBER

ALL TEAK, SPRUCE, MAHOGONY AND OTHER LUMBER INSPECTED AND SELECTED BY OUR BOAT BUILDING FACTORY MANAGER. CASTINGS ARE ALL PERSONALLY INSPECTED AND MACHINING SUPERVISED BY THE FACTORY MANAGER.

THE OWNER'S PACKET

THE OWNER'S PACKET SUPPLIED WITH EACH YACHT INCLUDES:

- * FINAL TEST LIST
- * PUMPS WARRANTIES AND PARTS LIST
- * TOILETS " " "
- * ENGINE " " "
- * PLUMBING, ELECTRICAL, AND SAIL PLAN DIAGRAM
- * LOOSE PART PACKING LIST

VENTILATION

SPECIAL ATTENTION HAS BEEN PAID IN THE DESIGN OF VAGABONDS FOR CRUISING IN THE TROPICS. 3 LARGE HATCHES ON THE CENTER LINE, 8 ROUND OPENING PORTS AND 6 RECTANGULAR ONES AND 5 DORADE VENTS ARE PROVIDED.

SPARS, RIGGING AND SAILS

MASTS AND BOOMS ARE HOLLOW WHITE PAINTED OR VARNISHED TAIWAN SPRUCE, RESORCINAL GLUED, OR OPTION ALLOY MAST WITH S.S. MAST TANGS AND FITTINGS. 1" S.S. MAST AND BOOM TRACKS.

S.S. 1 x 19 STANDING RIGGING. DACRON TAILS ON S.S. WIRE HALYARDS. DACRON SHEETS AND STAYSAIL HALYARDS. MASTHEAD LIGHT, STEERING LIGHT, INTERNAL CONDUIT FOR ADDITIONAL WIRING OR MASTHEAD INSTRUMENTATION.

S.S. HIGH QUALITY TURNBUCKLES WITH BUILT-IN TOGGLES.

HEAVY DUTY STAINLESS STEEL MAST TANGS.

THE STAYSAIL IS BIG AND BALANCED WITH THE MAIN TO ALLOW SELF TENDING WHILE TACKING IN RESTRICTED WATERS OR SHORT HANDED SAILING. THE MAIN IS LARGE, THE MIZZEN MODERATE. SHE WILL SAIL AND BALANCE WELL AS A CUTTER. SHE WILL SAIL HAND-SOMELY UNDER A MIZZEN STAYSAIL AND A 150 GENOA.

S.S. STANDING RIGGING AND SWAGES OR STAYLOOKER.

4" TEAK SHELL BLOCKS WITH BRONZE ROLLER BEARINGS ON HALYARDS AND SHEETS.

DACRON AND WIRE RUNNING RIGGING.

DECK

ONE PIECE, FULLY MOLDED F.R.P. WITH OPTIONAL TEAK OVERLAY.

BOW PULPIT, DOUBLE LIFELINES, GATE, S.S. STANCHIONS, MAIN GALLOWS FRAME, MIZZEN GALLOWS, INLAND AND INTERNATIONAL RUNNING LIGHTS, MAINSHEET AND STAYSAIL SHEET TRAVELER, FIVE RAIL AT MAST, SELF-TENDING STAYSAIL PEDESTAL BOOM AND RIGGING, PEDESTAL WHEEL STEERING WITH BRAKE AND DUAL LEVER MORSE CONTROLS, TEAK WHEEL WITH S.S. RIM, EMERGENCY TILLER, TEAK HATCH FRAMINGS, RAIL CAPS, AND TOE RAILS, ALL BRONZE OR S.S. FITTINGS AND HARDWARE, INBOARD SCUPPERS. MIDSHIP CHOCKS AND CLEATS P & S, 1½" x 8 FT. GENOA TRACK P & S ON POOP DECK WITH CAPS. ALL STRESSED DECK FITTINGS, STANCHIONS, ETC., ARE THRU-BOLTED TO SUITABLE BACKING PLATES.

ENGINE AND MECHANICAL

- * MODEL 4D-254 FORD-LEHMAN, DIESEL ENGINE, 85 H.P. OR PERKINS WITH PARAGON SERIES 155, 2½:1 HYDRAULIC REDUCTION GEAR. (FREE WHEELING STYLE)
- * 24" x 18" THREE BLADED PROPELLED MORSE DUAL LEVER CONTROLS, FLEXIBLE ENGINE MOUNTS.
- * ENGINE IS ENCLOSED IN INSULATED ENGINE ROOM WITH EXCELLENT ACCESS FULL HEAD-ROOM AND BUILT-IN WORKBENCH AND TOOL CABINET IN SOME MODELS.
- * PROVISION UNDER WORK BENCH FOR INSTALLATION OF DIESEL AUXILIARY GENERATOR UP TO 7.5. K.W.
- * EDSON TYPE 2" BRONZE BILGE PUMP.
- * STANDARD ENGINE INCLUDES MOTOROLA 55 AMP ALTERNATOR, JABSCO RAW WATER PUMP, 'FRAM' FUEL FILTER AND WATER SEPARATOR, ENGINE FUEL FILTER, ALARM SYSTEM FOR OIL PRESSURE AND WATER TEMPERATURE, SENDURE HEAT EXCHANGER AND FRESH WATER COOLING SYSTEM.

DELUXE ELECTRICAL INSTRUMENT PANEL IN COCKPIT WITH ILLUMINATED INSTRUMENTS INCLUDING TACHOMETER, ENGINE HOUR METER, WATER TEMPERATURE GAUGE, AMMETER, OIL TEMPERATURE GAUGE, STOP CONTROL.

- * FLEX EXHAUST SYSTEM WITH DUAL S.S. WATERLOCK MUFFLER SYSTEM.
- * ENTIRE EXHAUST SYSTEM VISIBLE AND ACCESSIBLE, CONFINED TO ENGINE ROOM, AND VERY QUIET.
- * H.D. STEERING STOPS ON QUADRANT, BUILT IN SHEAVES ON STEERING QUADRANT ASSEMBLY.
- * STRONG EMERGENCY TILLER. TILLER LINES CAN EASILY BE RIGGED TO WINCHES FOR EASY TILLER STEERING.

ELECTRICAL

- * 55 AMP 12 VOLT D.C. ALTERNATOR ON ENGINE.
- * 200 AMP/HOUR BATTERY IN FIBERGLASS BOX WITH PROVISION FOR (2) ADDITIONAL.
- * OVERHEAD DOME LIGHTS ALL CABINS, READING LIGHTS ALL BERTHS, INLAND AND INTERNATIONAL RUNNING LIGHTS, GROUNDED CHAINPLATES, KEEL, TANKS AND ENGINE.
- * SOPHISTICATED COLOR CODED WIRING SYSTEM.
- * 16 BREAKER 12V D.C. PANEL WITH OWNER'S NAME ENGRAVED. (U.S. BREAKERS) VOLTMETER AND AMMETER.
- * 6 SWITCH NAVIGATION LIGHT AND DECK LIGHT SWITCH PANEL IN COCKPIT.
- * 115V, 6 BREAKER A/C PANEL WITH HUBBEL SHORE CONNECTOR AND 7 DOUBLE 3 POLE OUTLETS.

PLUMBING

- * PAR WATER F.W. PRESSURE SYSTEM WITH OPTIONAL HAND F.W. PUMPS IN BOTH HEADS AND GALLEY, S.W. OPTIONAL.
- * 10" DEEP DOUBLE STAINLESS STEEL SINK IN GALLEY, LARGE S.S. SINKS IN TOILETS.
- * FULLY MANIFOLDED F.W. SYSTEM WITH 3 SEPARATE S.S. TANKS.
- * 1/2" COPPER PIPING ON HOT WATER LINES
- * COMBINED LOVETT AUTOMATIC SUMP AND BILGE PUMP FOR 2 SHOWERS.
- * HIGH QUALITY CHROMED BRASS H. & C. WATER FAUCETS ON ALL SINKS.
- * TELEPHONE TYPE SHOWERS.
- * F.W. TANKS VENTED TO LIFELINE STANCHIONS.
- * 200 GALLON FUEL OIL IN TWO BLACK IRON TANKS.
- * 200 GALLON FRESH WATER IN 3 S.S. TANKS.
- * DECK FILLS, VENTS, PIPING VALVING AND MANIFOLDING TO PERMIT INDIVIDUAL TANK SHUTOFF.

INTERIOR APPOINTMENTS

- * BEAUTIFUL TEAK DRAWERS, JOINER WORK, FURNITURE AND TRIM. CHOICE OF OIL OR SATIN VARNISH FINISH.
- * GLOSS WHITE PAINTED INSET PANELS AND BULKHEADS (OR TEAK OVERLAYS) TEAK CABIN SOLES.
- * TREMENDOUS STORAGE SPACE IN MANY LOCKERS AND DRAWERS.
- * WHITE FORMICA COUNTER TOPS IN GALLEY.
- * 3 BURNER ALCHOHOL STOVE WITH OVEN.
- * HEAVILY INSULATED 12 CU. FT. ICEBOX DESIGNED FOR INSTALLATION OF MECHANICAL OR ELECTRICAL REFRIGERATION, WITH SEPERATE DEEP FREEZE AND REFRIGERATOR.
- * FIBERGLASS SHOWER SUMP.
- * HEADS HAVE WHITE FORMICA; COUNTER TOPS, STAINLESS STEEL SINKS, RARITAN MARINE TOILETS, SPACE FOR ADDITION OF HOLDING TANKS.
- * COUNTOURED FOAM BERTH AND SETTEE CUSHIONS THROUGHOUT.

SAILS

- * 4 WORKING TERYLENE (SOFT DACRON) SAILS: MAIN, MIZZEN, JIB AND STAYSAIL 8 OZ., REEFING POINTS AND HEAVY REEFING CRINGLES ON MAIN, MIZZEN AND STAYSAIL.

MISCELLANEOUS

- * BOTTOM PAINT, RED; BOOT TOP, BLUE; BLUE TRIM STRIPING, SCROLLS.
- * FLAGSTAFF AND SOCKET, CARBED TEAK TRAILBOARDS WITH SCROLLS P & S.
- * 7/8" STAINLESS STEEL BOBSTAY WITH PROVISION FOR HEAVY ANCHOR PENNANT, HEAVY TEAK RUB STRAKES P & S.

BUILDER RESERVES THE RIGHT TO CHANGE SPECIFICATIONS WITHOUT NOTICE

VAGABOND VOYAGER 47

BLUEWATER CRUISING KETCH AND LIVE-ABOARDER IN FIBERGLASS

A WILLIAM GARDEN, N.A., DESIGN

SPECIFICATIONS AND STANDARD EQUIPMENT LIST

ALL OF THE FOLLOWING ITEMS ARE TO BE INCLUDED IN THE YACHT BASE PRICE

L.O.A.	46'-7"
L.W.L.	36'-0"
DISPLACEMENT	40,000 LBS
BALLAST-IRON (ENCAPSULATED INSIDE HULL)	12,000 LBS
BEAM	13'-5"
DRAFT (LIGHT 38,000 LBS)	5'-3"
DRAFT (LOADED 44,000 LBS)	5'-6"
MAST HEIGHT FROM D.W.L.	55'-1"

1. HULL: ONE PIECE HEAVY MOLDED FIBERGLASS USING APPROVED POLYESTER RESINS, FERRO (USA) GELCOAT AND BUILT TO THE NEW A.B.S. (AMERICAN BUREAU OF SHIPPING) AND LLOYDS YACHT STANDARDS.
2. DECK: ONE PIECE FULLY MOLDED F.R.P. DECK WITH 8" BULWARKS FORWARD OF POOP DECK FOR SAFE FOOTHOLD AT SEA. THE DECK IS BOLTED THROUGH INTEGRAL GLASS HULL FLANGE WITH S.S. BOLTS AND SEALED WITH DUPONT SEALANT.
3. ENGINE AND MECHANICAL: MODEL 4D-254 FORD-LEHMAN DIESEL ENGINE, 85 H.P. WITH PARAGON SERIES 155, 2½:1 HYDRAULIC REDUCTION GEAR. (FREE WHEELING STYLE)

STANDARD ENGINE INCLUDES MOTOROLA 55 AMP ALTERNATOR, JABSCO RAW WATER PUMP, 'FRAM' FUEL FILTER AND WATER SEPARATOR, ENGINE FUEL FILTER, ALARM SYSTEM FOR OIL PRESSURE AND WATER TEMPERATURE, SENDURE HEAT EXCHANGER AND FRESH WATER COOLING SYSTEM.

DELUXE ELECTRICAL INSTRUMENT PANEL IN COCKPIT WITH ILLUMINATED INSTRUMENTS INCLUDING TACHOMETER, ENGINE HOUR METER, WATER TEMPERATURE GAUGE, AMMETER OIL TEMPERATURE GAUGE AND STOP CONTROL.

4. SEMI-GLOSS WHITE PAINTED BULKHEADS WITH TEAK TRIM
5. WHITE PLASTIC LAMINATE COUNTER TOPS IN GALLEY AND HEADS
6. MAINSAIL — 8 OUNCE 'TETERON'
7. MIZZEN
8. STAYSAIL
9. JIB

SPECIFICATIONS (CONT)

10. (2) #22 — 316 S.S. TWO SPEED JIB SHEET WINCHES
11. (1) #16 — 316 S.S. STAYSAIL SHEET WINCH
12. (1) #16 — 316 S.S. MAIN SHEET WINCH
13. (1) #16 — 316 S.S. JIB HALYARD WINCH
14. (1) #16 — 316 S.S. STAYSAIL HALYARD WINCH
15. (1) #16 — 316 S.S. MAIN HALYARD WINCH
16. (1) #10H — 316 S.S. FOR JIFFY REEFING, MOUNTED ON MAIN BOOM
17. (2) BLACK IRON FUEL TANKS TOTAL 230 U.S. GALLONS
18. (2) S.S. FRESH WATER TANKS TOTAL 230 U.S. GALLONS
19. FRESH WATER HOT AND COLD PRESSURE SYSTEM WITH PAR EXTRA HEAVY DUTY PUMP AND COPPER HOT AND COLD WATER PIPING
20. 8-GALLON HOT WATER TANK — 110V
21. ENGINE HEATING OF FRESH WATER SYSTEM
22. (1) LOVETT AUTOMATIC BILGE SUMP PUMP
23. (1) PAR 12V BILGE SUMP PUMP
24. AUTOMATIC BILGE LEVEL SWITCH (1)
25. (1) HAND BILGE PUMP (GUZZLER TYPE) MOUNTED ADJACENT TO ENGINE ROOM
26. (2) MANUAL TOILETS (GROCO OR PAR I.T.T.)
27. (2) SHOWERS WITH TEAK GRATINGS
28. (2) S.S. WASH BASINS (ONE IN EACH HEAD)
29. S.S. SINK IN GALLEY
30. S.S. LOW PULPIT
31. TEAK BOWSPRIT GRATING
32. S.S. STANCHIONS
33. S.S. STERN PULPIT WITH GATE
34. DOUBLE LIFELINES WITH GATES P AND S
35. (2) BRONZE AND S.S. SELF STOWING ANCHOR ROLLERS FOR ANCHORS
36. TEAK COCKPIT GRATING
37. 30" TEAK WHEEL WITH S.S. RIM
38. MORSE CONTROL LEVERS FOR THROTTLE AND TRANSMISSION MOUNTED ON PEDESTAL
39. HEAVY DUTY EMERGENCY TILLER
40. 4" FOAM CUSHIONS WITH VINYL COVERS
41. TEAK AND HOLLY CABIN SOLE THROUGHOUT
42. 110V A/C SYSTEM WITH SEVEN (7) 3 POLE DUPLEX RECEPTACLES
43. S.S. WATER LOCK EXHAUST SYSTEM WITH TRANSOM VALVE
44. 1½" DIAMETER PROPELLOR SHAFT WITH 24" x 18" — 3 BLADE LEFT HAND PROPELLOR
45. BRONZE STRAINER FOR ENGINE COOLING WATER INTAKE
46. 8 FT. TEAK AND BRONZE BOAT HOOK
47. SELECTED SPRUCE MAIN AND MIZZEN MASTS OR OPTION ALLOY MAST
48. SELECTED SPRUCE MAIN, MIZZEN AND STAYSAIL BOOMS
49. ALL S.S. RIGGING WITH S.S. TURNBUCKLES AND BUILT-IN TOGGLES
50. ALL S.S. HIGH QUALITY MAST TANGS AND BOOM FITTINGS
51. S.S. MAIN BOOM GALLOWES
52. S.S. MIZZEN BOOM CRUTCH

SPECIFICATIONS (CONT)

- 53. (8) 6" ROUND BRONZE OPENING PORTS
- 54. (6) 5 x 12 BRONZE RECTANGULAR OPENING PORTS
- 55. (11) BULKHEAD LIGHTS
- 56. (11) CABIN DOME LIGHTS
- 57. (1) 110V POWER INLET
- 58. (2) S.S. GENOA TRACKS — 1½ x 8 FT.
- 59. S.S. MAIN SHEET TRAVELER
- 60. (5) FIBERGLASS COWL VENTS MOUNTED ON DORADE BOXES
- 61. TEAK FLAGPOLE AND BASE
- 62. CLUB STAYSAIL BOOM AND PEDESTAL
- 63. WIRING FOR SPREADER LIGHTS IN MAIN AND MIZZEN MASTS
- 64. ¾" PVC CONDUIT IN MAIN AND MIZZEN MASTS FOR ELECTRONICS
- 65. TEAK NAME BOARD AND HAILING PORT BOARD MOUNTED ON TRANSOM
- 66. (3) FRESH WATER FOOT PUMPS
- 67. (1) SALT WATER FOOT PUMP (AT GALLEY SINK)
- 68. TEAK DECKS
- 69. (16) 12V CIRCUIT BREAKERS
- 70. (6) 110V CIRCUIT BREAKERS
- 71. (1) FIBERGLASS BATTERY BOX
- 72. S.S. PEDESTAL HAND GUARD
- 73. (18) TEAK BLOCKS
- 74. (22) S.S. SHACKLES
- 75. (2) BRONZE STERN WINDOWS
- 76. (2) 12" BRONZE MOORING CLEATS AND FAIRLEADS
- 77. (2) 12" BRONZE HAWSER CLEATS
- 78. FIFE RAIL WITH SIX (6) BELAYING PINS
- 79. (1) FIXED TEAK TABLE AND ONE COFFEE TABLE
- 80. TEAK ON TRUNK
- 81. INTERIOR TEAK VARNISHED INSTEAD OF OIL
- 82. 12V BLOWER FOR ENGINE ROOM VENTILATION
- 83. TEAK OVERLAY ON TOP OF HOUSE
- 84. TEAK T & G OVERLAY ON BULKHEADS THROUGHOUT
- 85. HYNAUTIC, SAILING HYDRAULIC STEERING IN STD. V47

BUILDER RESERVES THE RIGHT TO CHANGE SPECIFICATIONS WITHOUT NOTICE

P. O. BOX 45-1, TAIPEI
TAIWAN, REPUBLIC OF CHINA
Office: 5362671-5 (5 Lines) Factory: 6362202

Telex: 26488 BLUEWATR
Cable: BLUEWATER

Option List for 47' Vagabond Ketch

	Qty	Amount
1. Extra fiberglass battery box installed	_____	_____
2. Extra 220 Amp/hour 12V batteries and wiring	_____	_____
3. Extra 5" x 12" bronze opening port rectangular	_____	_____
4. Extra 7" x 14" bronze opening port rectangular	_____	_____
5. Brass rub strips on rubrail	_____	_____
6. 4" foam cushion for cockpit 5 pcs	_____	_____
7. 12V cable battery to windlass 38 m/m	_____	_____
8. Ricardo lynn dining chair	_____	_____
9. S.S. chafe plate bow, gate and company way	_____	_____
10. Fiber glass dog house with teak trim installed	_____	_____
11. 8" Fiberglass dinghy with teak trim	_____	_____
12. Deck prism	_____	_____
13. Dinghy cradle	_____	_____
14. S.S. dinghy davits on stern 2" heavy duty	_____	_____
15. Fwd teak deck box behind main mast	_____	_____
16. 2 pcs aft FRP deck box	_____	_____
17. Electric head installed in place of manual	_____	_____
18. Blue water brass and copper fire place installed	_____	_____
19. Additional fuel or water tank	_____	_____
20. Fluorescent light	_____	_____
21. 12V fan installed	_____	_____
22. Fabric in place of vinyl	_____	_____
23. Gimballed dining table in saloon	_____	_____
24. 7.5KW Onan generator	_____	_____
25. S.S. mast granny bars	_____	_____
26. (2) hinged doors w/acrylic window at main hatch	_____	_____
27. Double hinges on focicle hatch for double opening	_____	_____
28. Additional 2' x 2' hatch over saloon	_____	_____
29. Midship hawser cleat	_____	_____
30. Hot & cold shower on deck	_____	_____
31. Additional 3/8" Jib stay with 5/8" turnbuckle	_____	_____
32. Extra lower rubrail teak	_____	_____
33. Green marble counter top in toilets	_____	_____
34. Teak medicine cabinets	_____	_____
35. Alloy masts and booms	_____	_____
36. Name carving and gold leaf paint	_____	_____
37. Additional 110V outlet	_____	_____

	Qty	Amount
38. Additional power inlet and wiring 38Amp		
39. Dock side pressure water w/o pump		
40. Lovett 12V auto/manual bilge pump		
41. Dacron running rigging — sheets and halyards		
42. Screen for all opening port (14 std)		
43. Mizzen stay sail		
44. Storm Jib		
45. Storm Staysail		
46. St. trysail		
47. 150% Genoa sail		
48. Roller furling 6.7Oz Genoa		
49. Spinnaker 1.5Oz		
50. Swing up seat to dining table in saloon		
51. Salt water wash down w/pump		
52. Sail covers		
53. Skylite hatch		
54. All sail in tan bark color		
55. Teak boarding ladder		
56. S.S. and teak boarding ladder		
57. 1 1/4" teak pad for anchor windlass		
58. Voyager teak taffrail		
59. 16" teak taffrail aft in place of life line		
60. Teak cockpit table		
61. FRP bathtub in aft head		
62. Exterior teak varnish instead of oil		
63. Teak taffrail & teak caprail varnish instead of oil		
64. Bronze & S.S. manual 2 speed anchor windlass installed		
65. S.S. weather dodger frame		
66. Bronze galley window aft cabin P & S		
67. Windlass 12V Nilsson all bronze Anchor windlass for 3/8" or 7/16" chain		
A. Vertical type with 1000 lb pull (V1000)		
B. Vertical type with 3000 lb pull (V3000)		
C. Horizontal type 3000 lb pull (HD3000)		
68. Winch Barlow 32 ST		
69. Winch Barlow 23 ST in place of #23		
70. Larger 2 pcs #26 ST, 2 pcs 24 ST, 4 pcs #22		
71. 4 FRP cover for big window		
72. ABS Certificate		
73. Launch in Keelung Harbor		

— VAGABOND 47 —
RUNNING RIGGING SCHEDULE

Halyards and topping lifts 3 strand polyester (Tetoron, Dacron, Terylene) standard. (or "Albraid")

		ALLOY -MAST	WOOD MAST
(1) Jib halyard	12mm	110 ft	101 ft
(1) Staysail halyard	12mm	76 ft	76 ft
(1) Main halyard	12mm	110 ft	102 ft
(1) Mizzen halyard	12mm	68 ft	62 ft
(1) Staysail T/lift	10mm	55 ft	55 ft
(1) Main T/l	12mm	110 ft	97 ft
(1) Mizzen T/lift	12mm	68 ft	62 ft

SHEETS:

"ALBRAID" double braid Polyester/Dacron

(1) Working jib	12mm	112 ft	112 ft
(1) Staysail	12mm	82 ft	82 ft
(1) Main	12mm	80 ft	80 ft
(1) Mizzen	12mm	38 ft	38 ft

BOOMS:

(1) Jiffy reefing line	12mm	68 ft	68 ft
(1) Main outhaul wire	3/16"	internal	6 ft
dacron	10mm	internal	18 ft
(1) Mizzen outhaul wire	3/16"	internal	6 ft
darcon	10mm	internal	15 ft

EXTRAS:

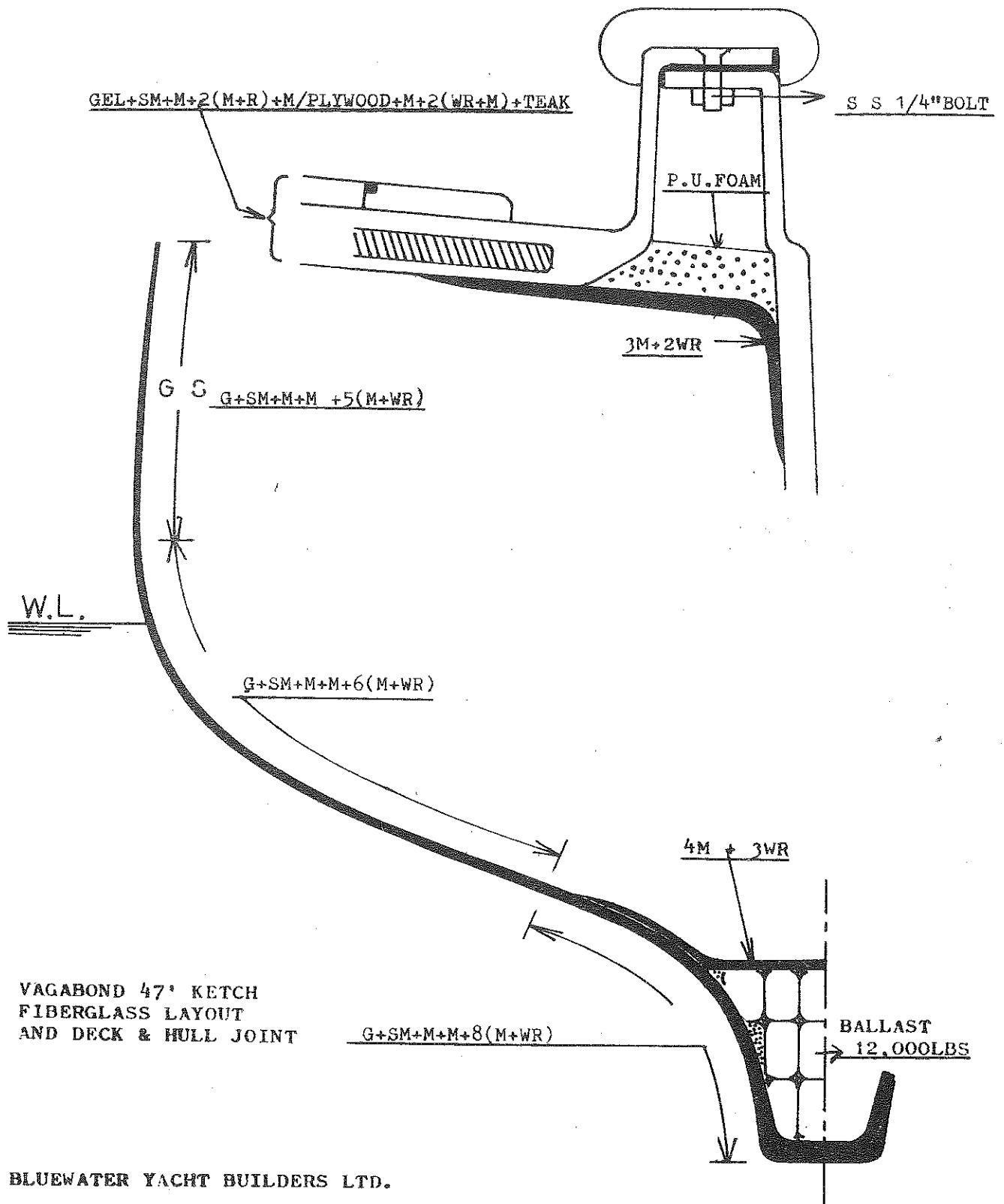
Spinnaker halyard	12mm	115 ft	106 ft
Spare jib halyard	12mm	110 ft	101 ft
Mizzen staysail halyard	12mm	64 ft	64 ft
Genoa sheets	16mm	150 ft	150 ft

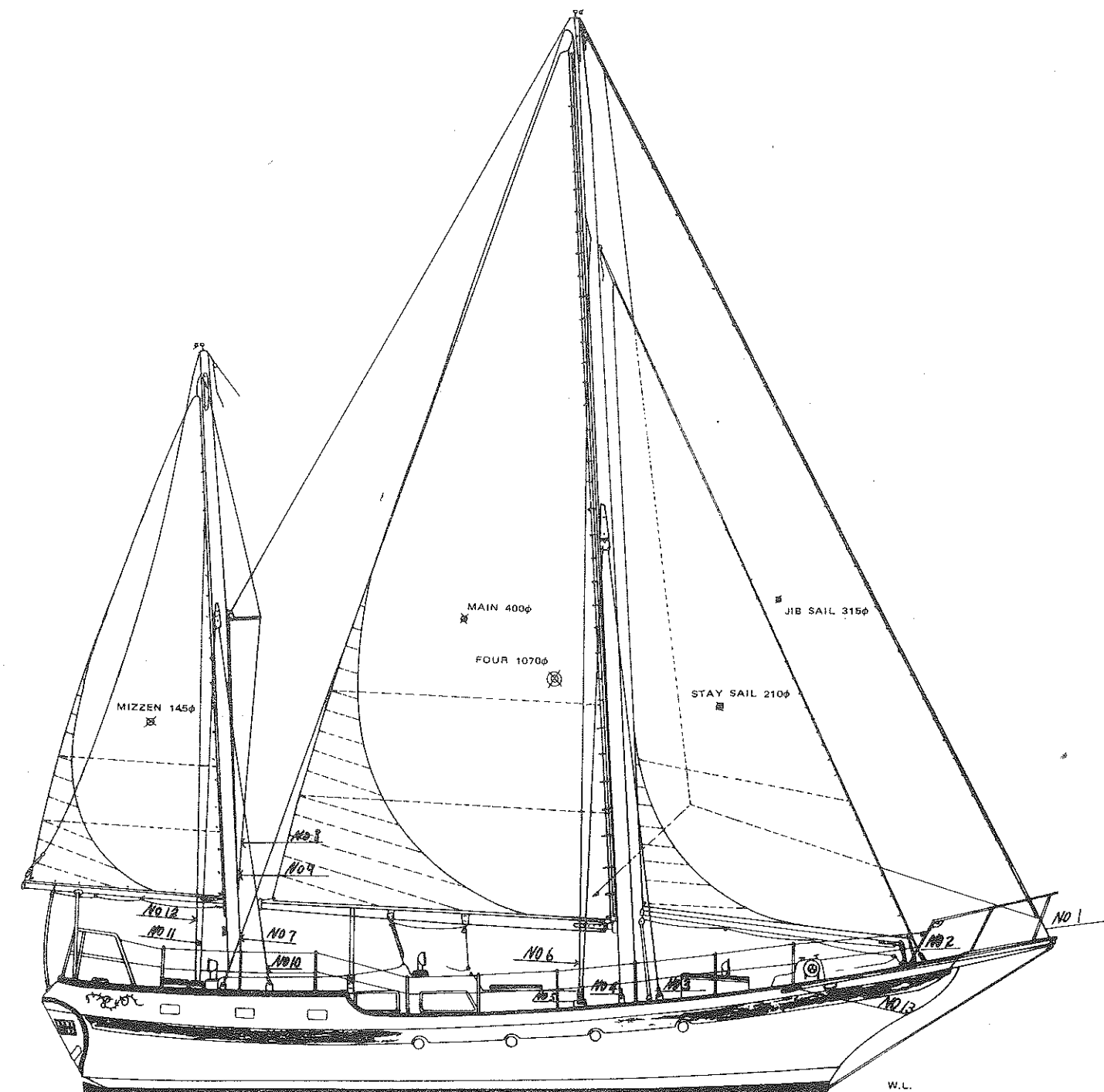
Dinghy Falls:

(2) Teak double blocks			
(2) Dacron ropes	12mm	32 ft	32 ft

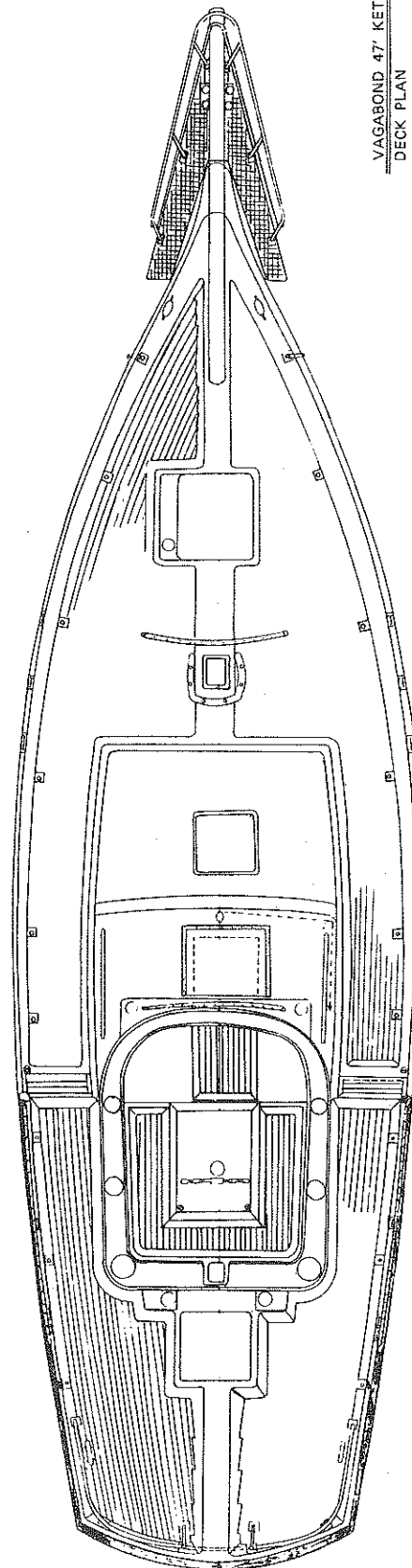
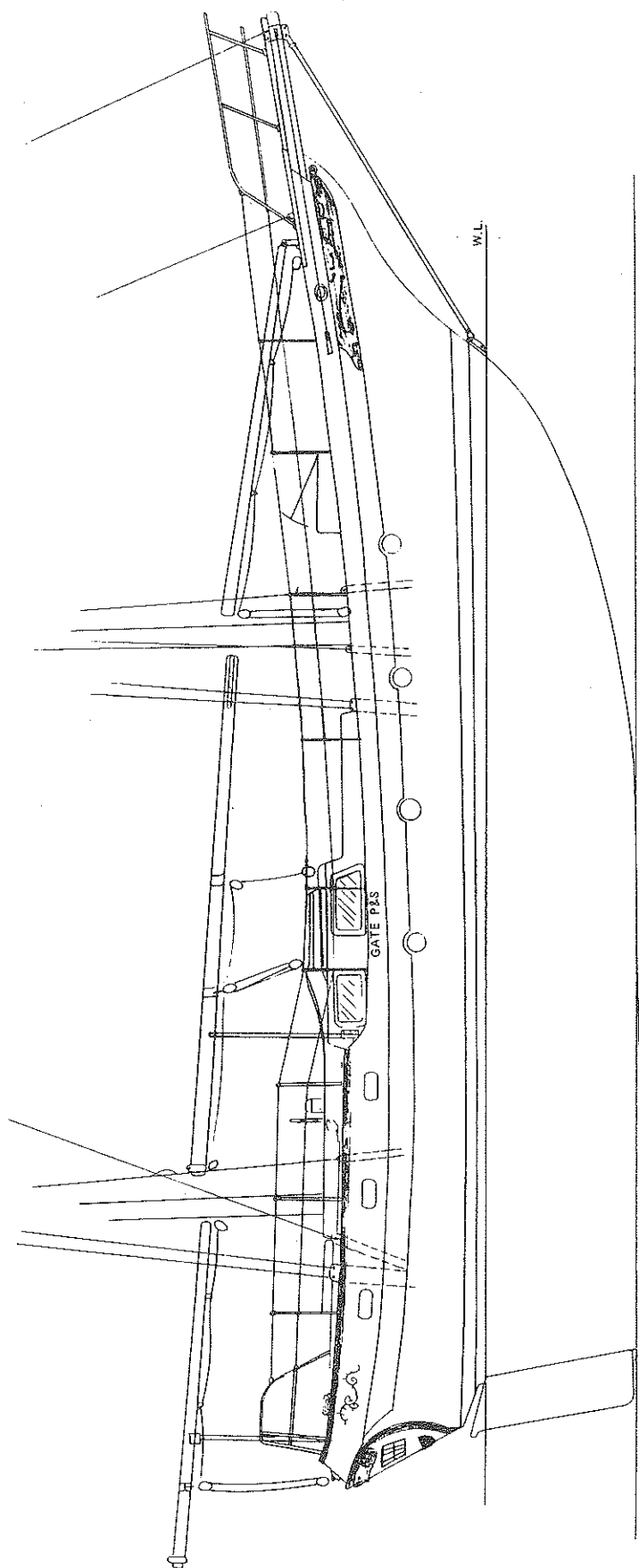
Total line required:

Standard	12mm	922 ft	880 ft
Standard	10mm	55 ft	77 ft

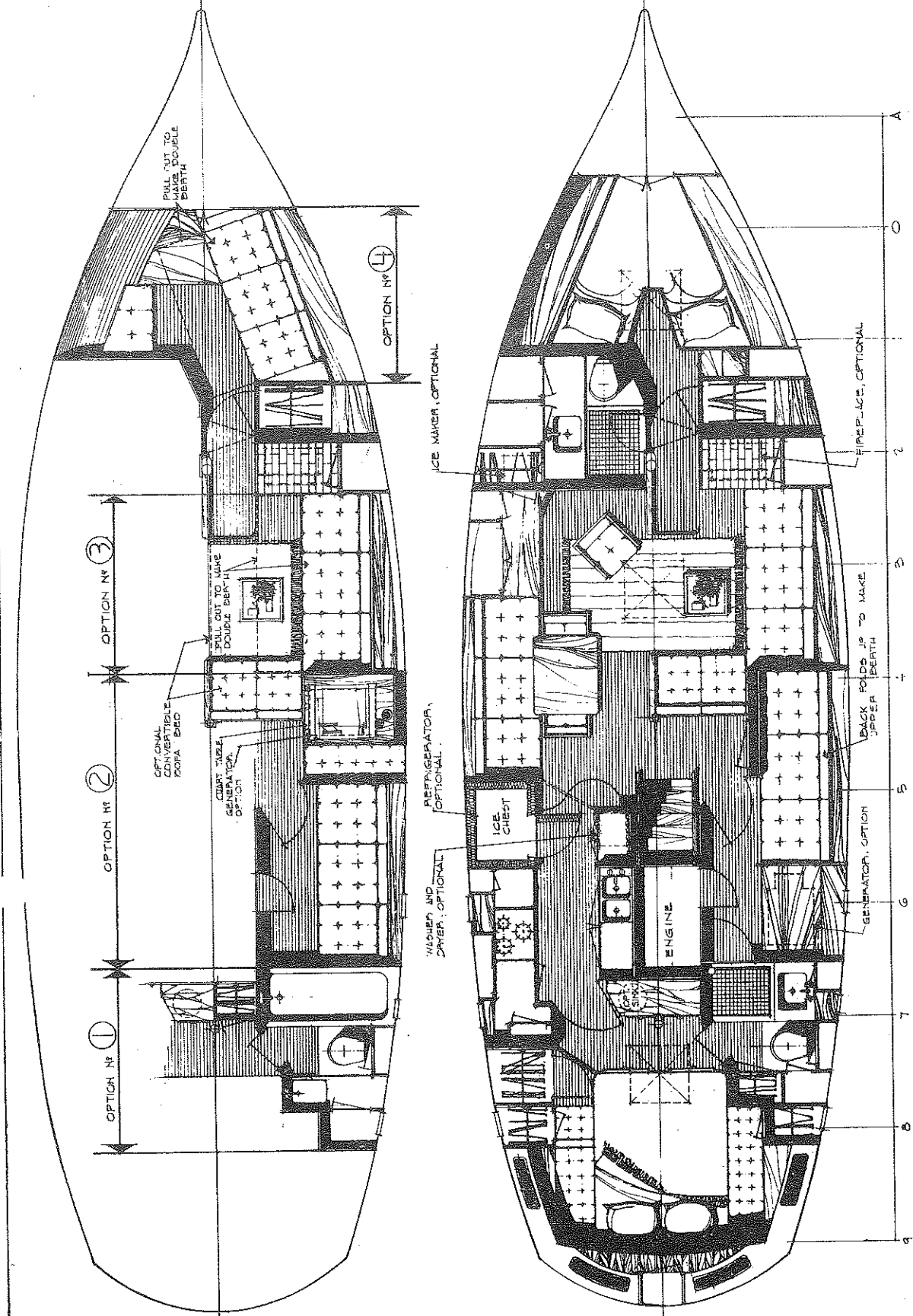




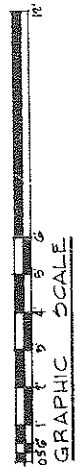
VAGABOND 47
 BLUEWATER YACHT BUILDERS LTD
 SAIL PLAN

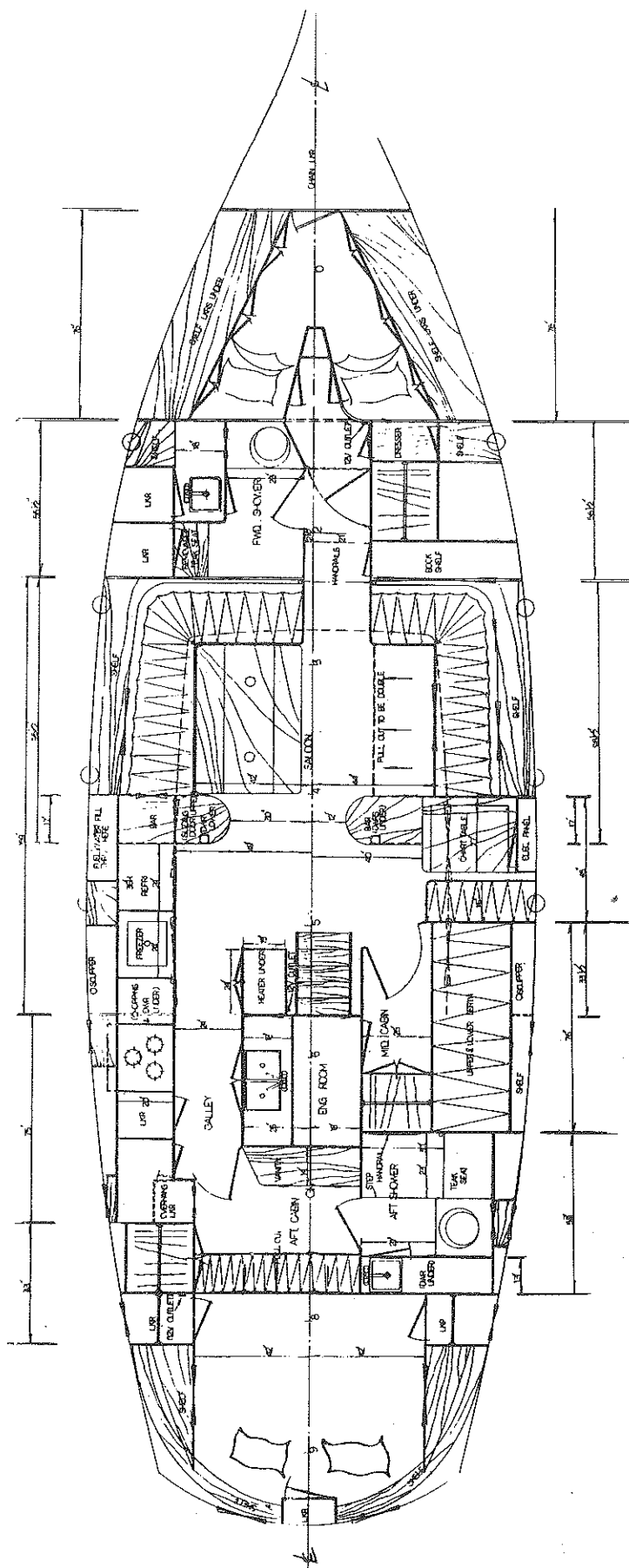
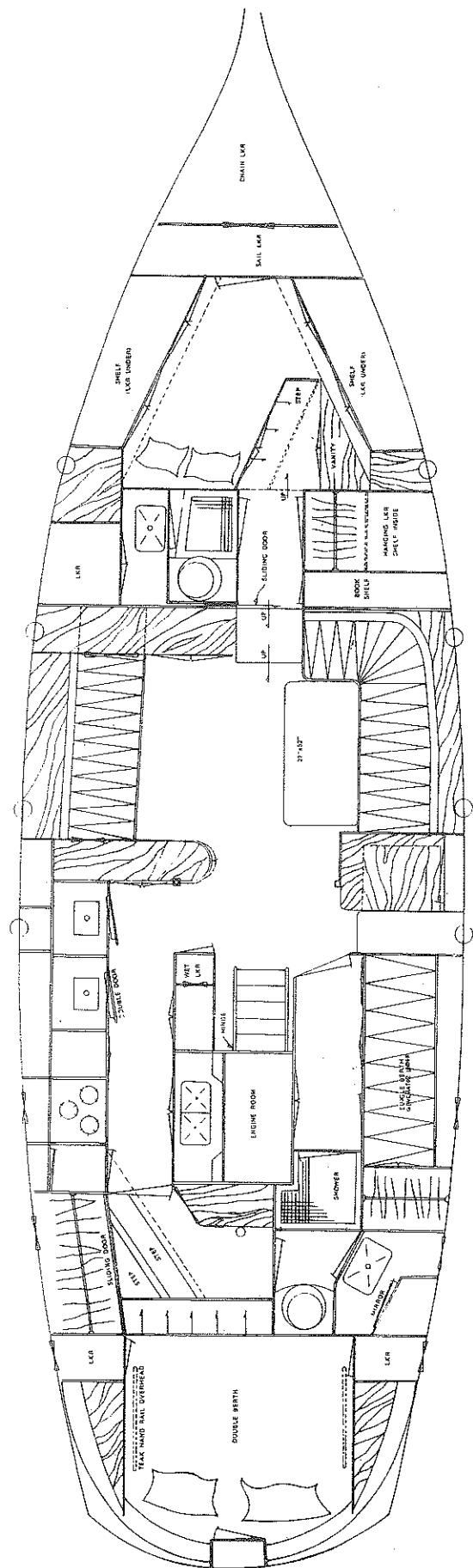


VAGABOND 47' KETCH
DECK PLAN



ARRANGEMENT PLANS

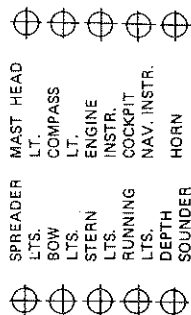
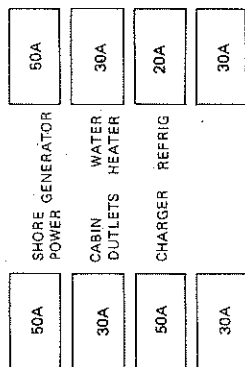
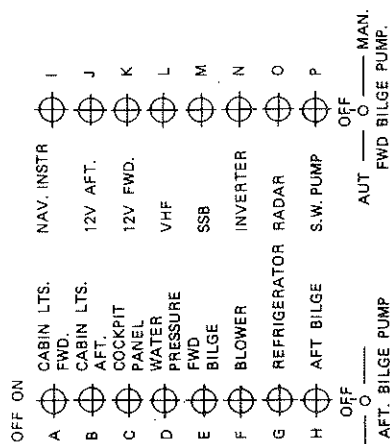




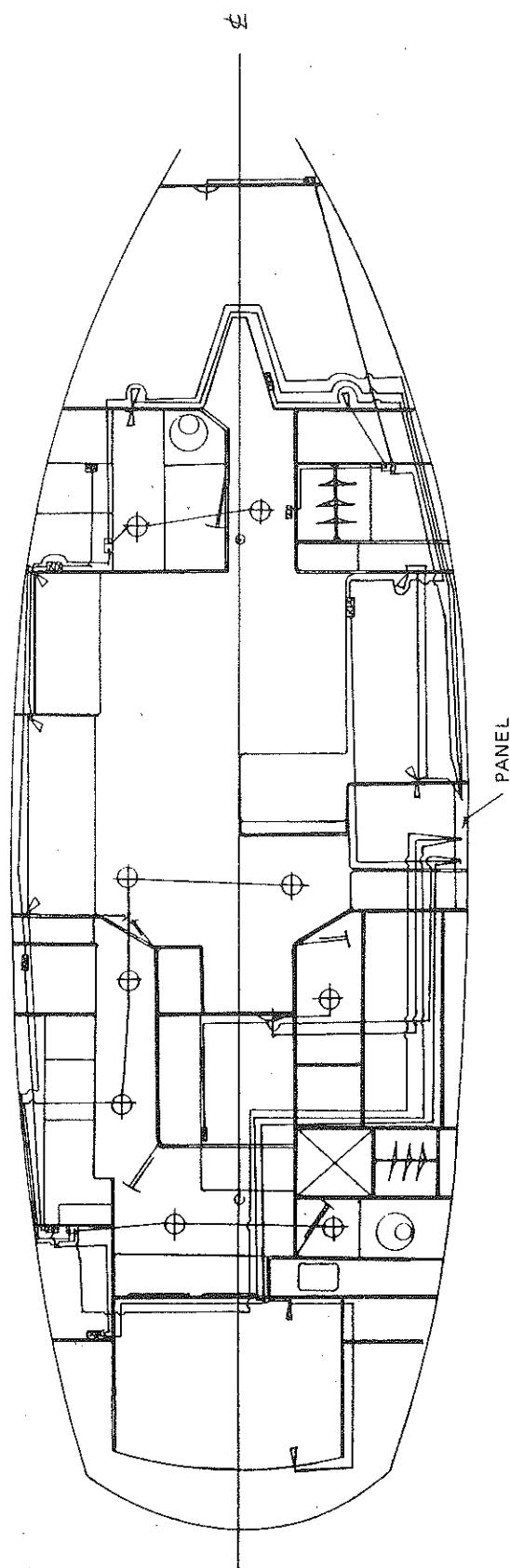
12V D.C.

110V A.C. OR 230V A.C.

12V COCKPIT
SWITCH PANEL



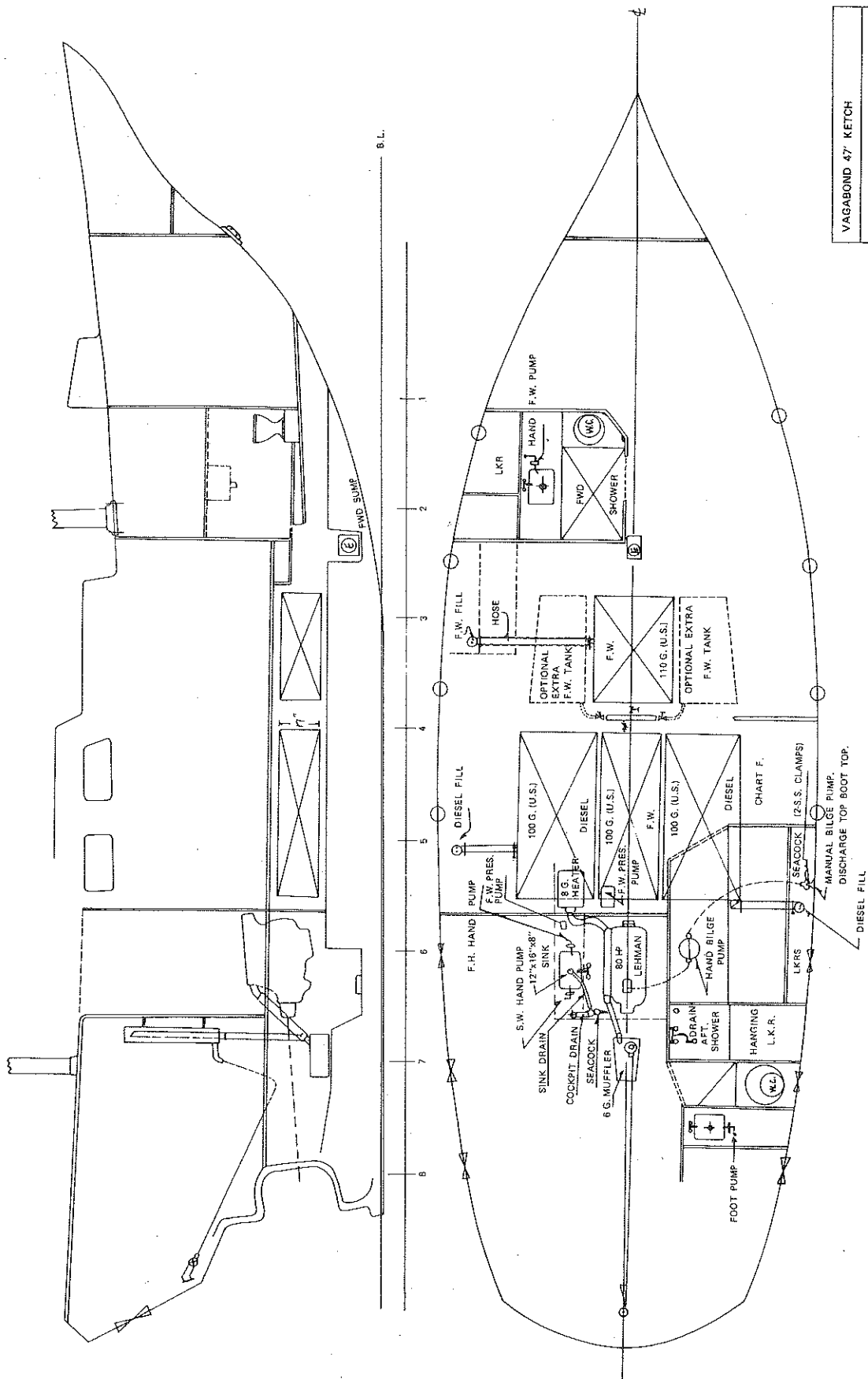
(11) EA. 12V DOME LTS.
 (11) EA. 12V BULKHEAD LTS.
 (7) EA. 110V OR 230V A/C DOUBLE OUTLETS
 (1) EA. 12V TERMINAL BLOCKS
 (1) EA. 115V OR 230V A/C



BLUEWATER YACHT BUILDERS LTD
VAGABOND 47
STANDARD ELECTRICAL LAYOUT

IMPORTANT:

- * NOTE 1. (2) ALL S.S. HOSE CLAMPS ON ALL HOSE/SEACOCK CONNECTIONS
- NOTE 2. ELECTRICAL BONDING

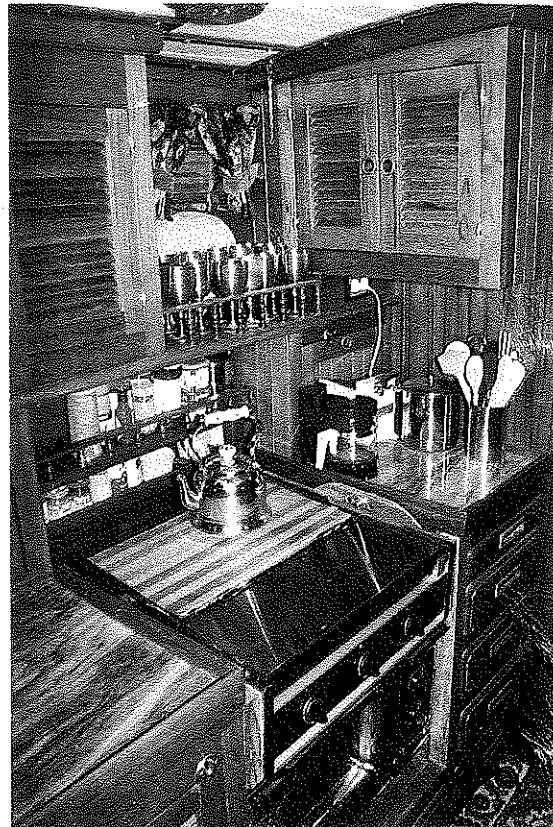


VAGABOND 47' KETCH
BLUEWATER YACHT BUILDERS LTD.
TANKS & PLUMBING



The VAGABOND 47 Standard Model, a full displacement yacht with good beam and great comfort in port and at sea. It has accommodations for , but can be sailed by 2.

With standard supplied equipment, the VAGABOND 47 provides a home that can be sailed anywhere, by a retired couple, a family of 5, a crew of 6, or 10 on a charter.



VAGABOND 47 STANDARD EQUIPMENT

CONSTRUCTION

Hull: One-piece hand layup FERRO gelcoats, rovings, & mats. U.S. resins.
1/2" thickness at deck.
3/4" thickness at water line.
1-1/8" thickness at keel.

Ballast: 12,000 lbs cast iron encapsulated in hull and glassed over.

Deck: One piece, fully molded FRP with optional teak overlay.

EXTERIOR

6 international style S.S. sheet & halyard winches.
Stainless stanchions & double life lines.
Stainless running and standing wire rigging (U.S. Dacron line).
Stainless chainplates, terminals, turnbuckles, genoa & sail tracks.
Stainless pulpit & galleys.
4 working sails of Dacron.
Deck hardware equipped to sail away.
6 12" bronze mooring cleats & fairleads.

INTERIOR

Berths: 8-10 berths (1 fixed table, 1 coffee table)
4" foam Naugahyde covered cushions on all settees/berths.

Electrical: 8 (U.S.) breaker 12V panel
6 breaker 110V switch panel
8 switch cockpit panel (navigation lights)
11 PERKO bulkhead reading lights.
11 Cabin dome lights.
HUBBELL 110V shore connector.

Plumbing: PAR water pressure pump (F.W. pressure & manual in both heads and galley, S.W. manual in galley).
LOVETT shower sump pump.
2 RARITAN toilets.

Mechanical: FORD-LEHMAN 85 h.p. diesel with flexible isolation mounts.
55 Amp MOTOROLA alternator.

Tanks: 230 Gallons F.W. (2 tanks) (250g. P.H. model)
230 Gallons diesel (2 tanks) (375g. P.H. model)
fuel for 1400-2000 mile cruising range.

OPTIONS: The VAGABOND 47 has been designed and equipped to keep option lists as short as possible. Care has been taken however, in making provision for installation of such items as micro-wave ovens, refrigerator/freezer, cold pumps, 12V windlass, A/C generator, additional 12V 120 Amp alternator, etc.

Remember to ask Bluewater's dealer for more information about standard features and optional equipment for the Vagabond 47' yacht.

Specifications subject to change without notice.