

P L A T I N U M

BRILLIANT FROM THE KEEL UP

4600 SPORT YACHT PLATINUM EDITION

Edition 23.2

PLATINUM

“On behalf of the 900-strong Riviera team, I am proud to introduce our superb new Sport Yacht, the 4600, created to Riviera’s world-class standards on Australia’s Gold Coast.”

RIVIERA SPORT YACHT COLLECTION

4600 • 5400 • 6000



A stylized, handwritten signature in black ink, likely reading 'Rodney Longhurst'.

Rodney Longhurst
Owner - Riviera







SO MUCH MORE TO ENJOY

The Riviera design team in collaboration with 4D Designs have created a very special yacht. Advanced hull design and leading-edge boat-building methods have given our 4600 Sport Yacht many impressive features. An improved power-to-weight ratio means greater fuel-efficiency, reflecting Riviera's legendary blue water performance.

A contemporary, new profile creates more volume offering a spacious cockpit, luxurious saloon and generous accommodation deck boasting a full-beam master suite. And there's so much more to enjoy in this superb 4600 Sport Yacht.

WELCOME ABOARD

As you step aboard, notice the generous boarding platform with a fixed hob from the transom that allows excellent access when your tender is secured. And standing on the teak-laid hob, you can lower the hydraulic swim platform to launch the tender without getting your feet wet. Just one of the many ways Riviera makes boating easier and more enjoyable.



CLEVER COCKPIT DESIGN

Teak steps port and starboard provide easy access to the side decks of your Sport Yacht. Entry to the cockpit is via a transom gate off the starboard steps. This design creates additional space in the port corner for a very comfortable L-shaped lounge. Together with a solid timber foldout table, it's the perfect alfresco setting and stretches round half the cockpit.

Relax or entertain in style with a premium sound system, drawer fridge, separate icemaker and a barbecue station with wet bar and sink. Twin electric sunroofs glide open at the press of a button to invite fresh air, the warmth of the sun or the sparkle of the stars.

Imagine you're entertaining in the cockpit now: it's sunset and you've found the perfect anchorage in one of the great waterways of the world.

Another magic moment savoured aboard your 4600 Sport Yacht.





EXCEPTIONAL ACCESS TO RELAX

Riviera Sport Yachts feature wide side decks with raised coamings illuminated in soft blue LED light, the sure-footed grip of non-skid surfaces and the reassuring support of 316 marine-grade stainless steel handrails all designed to make movement aboard confident.

At anchor, the foredeck becomes the perfect spot to stretch out and relax on a triple sunpad with adjustable backrests.



SINGLE-LEVEL LUXURY

Slide open the tinted glass door, then open out the large tinted glass awning window, both framed in superior stainless steel. Now the alfresco cockpit connects and flows through to the saloon and galley creating one large, single-level of luxury.

SETTLE INTO LUXURY

Starboard of the galley is a bar/serving station with a liquor cabinet for bottle and glassware and dual fridge-freezer drawers. Moving forward opposite the helm is a generous and luxurious U-shaped lounge dining area with solid timber folding table.

A premium sound system is waiting to entertain, hidden in the handcrafted cabinetry. Lower the window blinds and the saloon becomes a cinema room with a large LED TV tilting up into place on the starboard dash.







GOURMET GALLEY

Filled with natural light, the galley of your 4600 Sport Yacht has all the features of a designer kitchen. Premium appliances are beautifully integrated into the handcrafted Riviera joinery of varnished exotic timbers. The generous storage is well-organised with built-in overhead lockers, a pantry and crockery drawers.

Solid surface benchtops, electric cooktop, rangehood, combination microwave oven and the option of a drawer style dishwasher complete the galley wish list — an inspired space to enjoy preparing meals and socialising.





TAKE COMMAND

If you're comfortable behind the wheel of a contemporary luxury car, then you can confidently take command of this beautiful Riviera 4600 Sport Yacht.

Your helm is a state-of-the-art command station brimming with touchscreen technology. Visibility is outstanding through the curved tempered glass windshield. Captain and companion chairs are fully adjustable and deeply comfortable — the leather is hand-stitched and the mood is pure luxury.

TINTED GLASS AND ELECTRIC SUNROOF

Multiple reverse-cycle air conditioning systems keep you and your guests comfortable throughout the yacht, but when you're cruising and on a perfect day there is no better tonic than sliding back the large electric sunroof and side windows to let the fresh sea air flow through.







THREE STATEROOMS TWO BATHROOMS

The accommodation deck boasts a level of appointments normally associated with the finest hotels and larger yachts. The timber-finished companionway impresses with generous headroom, space and welcoming light. While at night, a discreet guiding glow of soft LED lighting illuminates throughout. And for added comfort, all staterooms and bathrooms feature reverse-cycle air conditioning.

FULL-BEAM MASTER STATEROOM

Your master suite is bathed in natural light through large, tinted hull windows complete with opening portholes to invite a cool sea breeze at anchor. The walk-around island bed is an oversize queen and pure heaven, accented by a feature headboard in concert with lush, deep pile carpet underfoot. Boutique bedside tables are grain-matched and handcrafted with leather inlays. A chaise lounge portside tempts you to relax, whilst a highly-polished timber drawer bureau to starboard takes care of his and hers folding wardrobe. There's a generous, cedar-lined hanging locker plus a large pull-out storage locker under the flush-mounted LED TV.

DESIGNER ENSUITE

Beautifully handcrafted vanity cabinet, solid surface benchtop with porcelain basin, frameless glass door and teak shower seat... the mood is thoughtful, spacious, luxurious.



FORWARD VIP

VIP guests deserve the very best and that's what the forward stateroom of every Riviera delivers with private entry, large walk-around bed and natural light from tinted hull windows. The adjoining VIP ensuite will also delight.

Luxury appointments include solid surface benchtop with porcelain basin, full-sized shower with teak seat and frameless glass door — even a tinted hull window with opening porthole.





HOME FOR TWO MORE

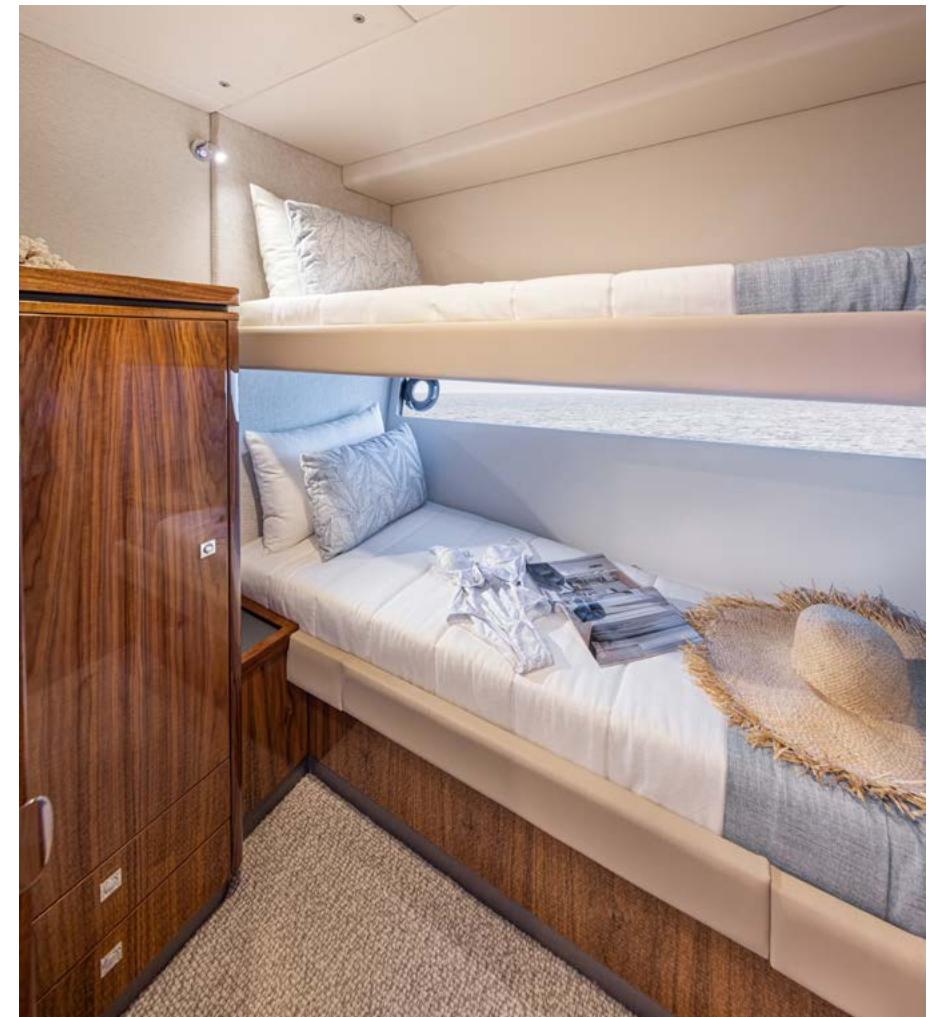
The port guest stateroom has two adult-sized beds, a cedar-lined hanging locker with drawers below, bedside table, private entry door and the luxury of a tinted hull window with opening port hole. Guests share the dual access bathroom of the forward stateroom which also serves as a day head.

LOWER LOUNGE WITH LED TV

There is also the option of a lower lounge in place of the port guest cabin. This becomes the perfect media room to entertain younger children, or perhaps the grandkids. The lounge also converts to a very accommodating double bed for overnight guests.

PACK A LITTLE LIGHTER

Optional for your 4600 Sport Yacht is a laundry station discreetly and centrally-located in the companionway of the accommodation deck. Whether you choose a stacked washer and dryer or a combination machine, there's an efficient solution to the fresh laundry needs of everyone onboard. So, you can pack a little lighter and enjoy your adventures for as long as you like.





WATERSPORTS GARAGE

The 4600 Sport Yacht's garage is a very practical area for all the family's fishing gear, water toys, floating mat, water scooter, snorkelling and dive gear — even a 2.7m kayak. Hose it all down with fresh water on the boarding platform ready for tomorrow's adventures.

The large garage door opens up at the press of a button and there is also easy access via a hatch in the cockpit to securely stow fenders.



THE POWER AND TECHNOLOGY

Riviera is at the forefront of a marine propulsion revolution, having now launched over 1,200 pod-driven luxury motor yachts. Pods are used on such worldly-form vessels as the Queen Mary II cruise ship as well as large scale commercial craft. This proven technology has revolutionised pleasure boating. Pod drives offer an excellent power-to-weight ratio delivering improved performance, enhanced torque, improved fuel efficiency, simple maneuverability, reduced environmental impact and quiet operation thanks to underwater exhausts. In simplified terms, Volvo Penta's innovative Inboard Propulsion System (IPS) features twin pod drive units, each of which is capable of turning independently to provide the correct thrust to move the yacht in the exact direction required by the skipper, easily controlling the system with either a steering wheel and throttles or a joystick. The 4600 Sport Yacht has two joysticks, one at the helm and another mounted to starboard in her cockpit.

IPS also offers a Dynamic Positioning System (DPS) for station-holding while preparing lines and fenders, or while waiting off a fuel jetty, the convenience of autopilot, manual trimming with optional auto-trim, as well as a highly-efficient Anti-Corrosion Protection (ACP) unit mounted to the transom to reduce the maintenance of sacrificial anodes.

For even greater ease of boating with Riviera, the latest smart technology is now available as an option on the 585 SUV. The Volvo Penta Assisted Docking system is the next generation of marine automation. It simplifies yacht docking and improves your control for manoeuvring in tight spaces to make docking easy in challenging conditions. With the joystick, you control the boat's path and speed, while the system compensates for elements such as wind and current. Push the joystick forward and the system lays out a straight path that the boat follows. At any time, you can release the joystick and your boat will hold on a fixed position.

Volvo Penta Easy Connect gives you an overview of your yachts and engine data, route information and more, by linking your engine, via Bluetooth, to your smartphone or tablet. Easy Connect consists of two parts – the Easy Connect Interface and the Easy Connect app. The app has functions to share your trips and map, your position or share diagnostic trouble codes with your dealer via email.

The three-blade nibrals, forward-facing, counter-rotating propellers are protected by the premium antifoul coating to achieve a long service-life, as well as 316 marine-grade stainless steel line cutters from Volvo Penta, located between the propellers for protection from fishing lines, plastic bags or nets. These precision-made line cutters create a very efficient rotating cutting action to protect the propellers and shaft sealing without increasing drag or fuel burn.

The 4600 employs the revolutionary Volvo Penta D8-IPS800 propulsion system (2x 441kW/600hp). This is a perfectly-matched drive package for the 4600 and the system's Class 5 commercial rating assures reliability and durability. Additionally, the IPS package is fully-certified under the Det Norske Veritas and Germanischer Lloyd (DNV GL) classification system.

ENGINEERING EXCELLENCE

The clean and uncluttered engine room — with acoustic and thermal insulation and LED lighting — highlights the skilled consideration for which Riviera engineering is respected globally. The impressive air intake system helps keep the engine room temperature below the manufacturer's recommendation, reducing fuel consumption even further.

All onboard drains feed into sumps while an advanced mist elimination system with vanes draws moisture from the air and feeds directly overboard. Three automatic bilge pumps and one manual bilge pump are located at various points throughout the hull and also pump directly overboard.

ELECTRICAL EXCELLENCE

All batteries onboard the 4600 are lithium-ion maintenance-free to ensure carefree boating, and are housed in special battery boxes in accordance with the American Boating & Yacht Council (ABYC) and European Union's CE industry standards.

The Mastervolt AC/DC inverter provides constant power to the icemaker and entertainment systems, so you can enjoy whisper quiet TV time at anchor. LED lighting is utilised throughout the yacht and provides trouble-free boating while reducing electrical current draw. Additionally, Residual Circuit Interrupter (RCD/GFCI) provides protection over the entire yacht and also complies with ABYC and CE standards.

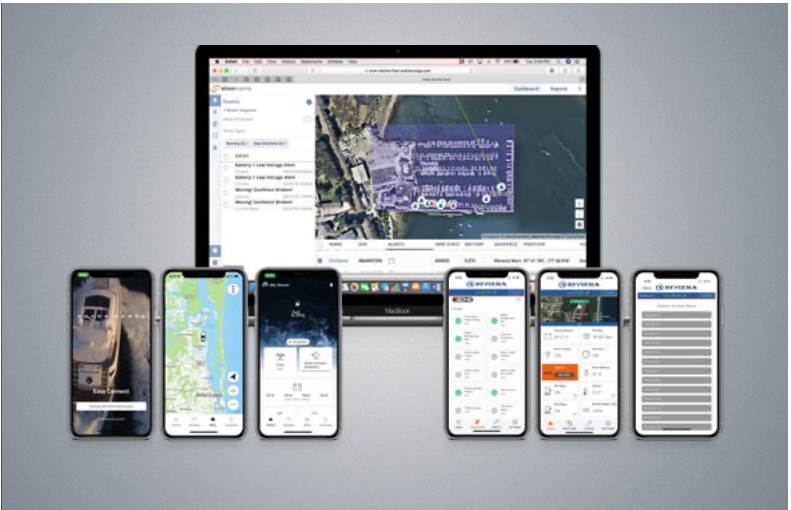
WINDOW TO THE FUTURE

Volvo Penta's state-of-the-art Glass Cockpit navigation and monitoring system, which blends new technology with dependability and practical functionality, can be fully optioned to the 4600 Sport Yacht.

The Glass Cockpit system provides a very clean, easy-to-use system with enhanced overview and control of both engines and navigation — including GPS, sounder and radar, even autopilot and optional charts — and all in one place and in the one system.

Integrated with the IPS Electronic Vessel Control (EVC) system, the Glass Cockpit gathers all driver information and displays it in one location. The easy-to-handle, pinch-to-zoom displays give you instant data and control. The ergonomic design and interface for the dashboard offers push buttons on the controls and touch-buttons on the screens.

Just one clever feature of the Glass Cockpit is the unique auto guidance feature that — based on the yacht's draft and your desired safety distance to obstacles — searches through all relevant charts to create a route you can follow while avoiding shallow water, buoys and other obstacles. Coupled with the autopilot, it not only shows the way, it can take you there.





CZONE SIMPLICITY

The fully integrated CZone digital switching system enhances the ease of monitoring and operation of the Riviera 4600's onboard systems, including tanks, and extends centralised touchscreen control to lighting, pumps, batteries, entertainment systems and appliances.

CZone allows owners to operate multiple circuits at a single touch, energising all lighting and electrics depending on your requirements. It comes pre-programmed with three modes — 'Entertaining', 'Cruising' and 'Dock-unattended' — and these modes can be customised. Other user-friendly features include: interior light-dimming; timer controls; automated circuit control; wiper speed and wash functions. There's also a 'Service' mode that shuts down all power and systems.

Based on industry-proven Controller Area Network (CAN) technology, the CZone system offers DC and AC switching and over-current protection. Full systems monitoring (with alarms) including AC voltage, current frequency and kilowatts, DC voltage, current and remaining battery capacity, along with fluid tank levels and indication for systems in operation, is clearly displayed on the touchscreen at the saloon entrance. There's also the option of additional iPad connectivity so you can control CZone from anywhere onboard your yacht.

INNOVATIVE OPTIONS

Wireless mobile device chargers, bedside in the master stateroom. Electric roller blind window furnishings, saloon and master stateroom. Single-glance helm control with cameras to aft, cockpit, bow anchor and engine room with direct feed to helm navigation screens. Volvo Assisted Docking System to remove the dynamics of wind and current when maneuvering in tight spaces.

IMPECCABLE PEDIGREE

Every Riviera combines superior-strength hand lay-ups with a watertight collision bulkhead forward, and independent compartments throughout the hull. Our legendary build quality also features vinylester resin in the outer layer of lamination to increase the ability to withstand water absorption. An isophthalic gelcoat exterior provides an impeccable and hard-wearing surface finish.

From the waterline down, the hull is solid GRP with reinforced bottom, keel and chines. Structural core material is used in the hull flanks, main deck and hardtop, while precisely-fitted, lightweight resin transfer-moulded small parts have a double-sided gelcoat finish and are pre-fitted for a perfect seal when all the major components are bonded together.

Riviera uses only 316 marine-grade stainless steel in all our exterior fastenings. All stainless steel rails feature ground and polished welds to ensure a consistently smooth and mirror finish.

As our designers have also placed a firm focus on convenient access to every key maintenance point throughout the yacht, any issues can be quickly identified and addressed, with service costs kept to a minimum.

INDUSTRY-LEADING WARRANTIES

We support all of our yachts with industry-leading warranties — 2-year express limited warranty and 7-year structural limited warranty. In addition, with all our Volvo Penta powered yachts, we offer a 5-year Volvo Penta systems and electronics limited warranty. Life is too short for needless compromise. So when it comes time to invest in your dream motor yacht, why settle for a lesser option when you can enjoy all that makes up a Riviera.

4600 SPORT YACHT SPECIFICATIONS

Length Overall <small>(inc. swim platform and bow sprit)</small>	15.31 m	50' 3"
Hull Length <small>(Lh to ISO8666)</small> *	13.16 m	43' 2"
Beam <small>(inc. gunwale)</small>	4.70 m	15' 5"
Maximum Draft <small>(inc. props)</small>	1.30 m	4' 3"
Dry Weight ** <small>(approx. depends on engines & options)</small>	19,200 kg	42,329 lb
Fuel Capacity ***	2,100 L	555 US gal
Water Capacity ***	620 L	164 US gal
Holding Tank Capacity ***	151 L	40 US gal

Sleeping Capacity	6 persons	
Cockpit Area	6.33 m²	68.14 ft²
Bridge Clearance	4.73 m	15' 6"
Standard Engine		
Volvo Penta D8 IPS 800 x 2	441 kW	600 hp each

*Specifications may vary on a regional basis.

CLARIFICATION AND OUR CARE FOR YOUR INFORMATION

- * Length of the hull (Lh) to ISO8666: includes all structural and integral parts (i.e. the moulded length of the hull). It excludes parts that can be removed in a non-destructive manner without affecting the structural integrity of the craft (e.g. pulpits, outdrives, driving platforms, rubbing strakes).
- ** Dry weight represents the estimated minimum weight of a yacht with standard engines and options, no fuel or water on board, no equipment or provisions and no personnel. The stated dry weight may be exceeded.
- *** Denotes net tank capacity. For useable capacity do not rely on more than 90% of tank capacity. Actual capacity will vary according to yacht trim and sea state. Speeds are subject to normal weather conditions, fuel and/or water levels, passengers and equipment loads.

Due to the constant refinement of specifications and design by Riviera Australia, the information in this document may change without notice. Specifications may vary with time and by region. Some images or illustrations in this brochure may include options or custom details. Please note that as safety equipment specifications or standards vary by country, this aspect of your purchase will need to be completed by you and/or your Riviera representative. Please refer to your Riviera representative for specific warranty cover and the latest detailed list of inclusions and options prior to purchase.



HARDTOP



SALOON DECK



ACCOMMODATION DECK



ACCOMMODATION DECK
Shown with optional foldout bed



ACCOMMODATION DECK
Shown with optional washer/dryer



RIVIERA TODAY

Welcome to the largest luxury yacht building facility in the Southern Hemisphere, our purpose-built, state-of-the-art 16.8 hectare site at Coomera, Gold Coast, Australia. Our proud heritage is a significant point of difference with the experience gained over 42 years launching over 5,900 luxury motor yachts. Handcrafting yachts internationally praised for their peerless quality, materials, structural strength, ease of operation and fine luxury finish.

Safety at sea is paramount and today's Riviera yachts are renowned for their blue water capability. So too is the passion for excellence shared by our award-winning Riviera team, maintaining a tradition of enduring quality that means your Riviera retains its value.

Today, Riviera builds the most advanced motor yachts ever, exporting around 55% of our annual production to a global dealer network spanning every continent. We design and build luxury motor yachts from 39 to 78 feet in length across six distinct model collections. Owners can choose from the proven blue water Flybridge range, stylish and sophisticated Sport Yachts, the sporty and adventurous SUV series, long-range Sports Motor Yacht designs, the luxurious new Motor Yacht or the classic Belize Motor Yachts. New models designed to inspire. It's all part of a deep-seated culture of customer care which goes beyond after-sales support and maintenance. When you acquire a Riviera, you join a family of fellow owners worldwide sharing adventures and advancing their boating knowledge and experiences in harmony with us.



RivieraAustralia.com