

# THE YACHTHOUSE 70

49  
feet

Price from: € 298.000



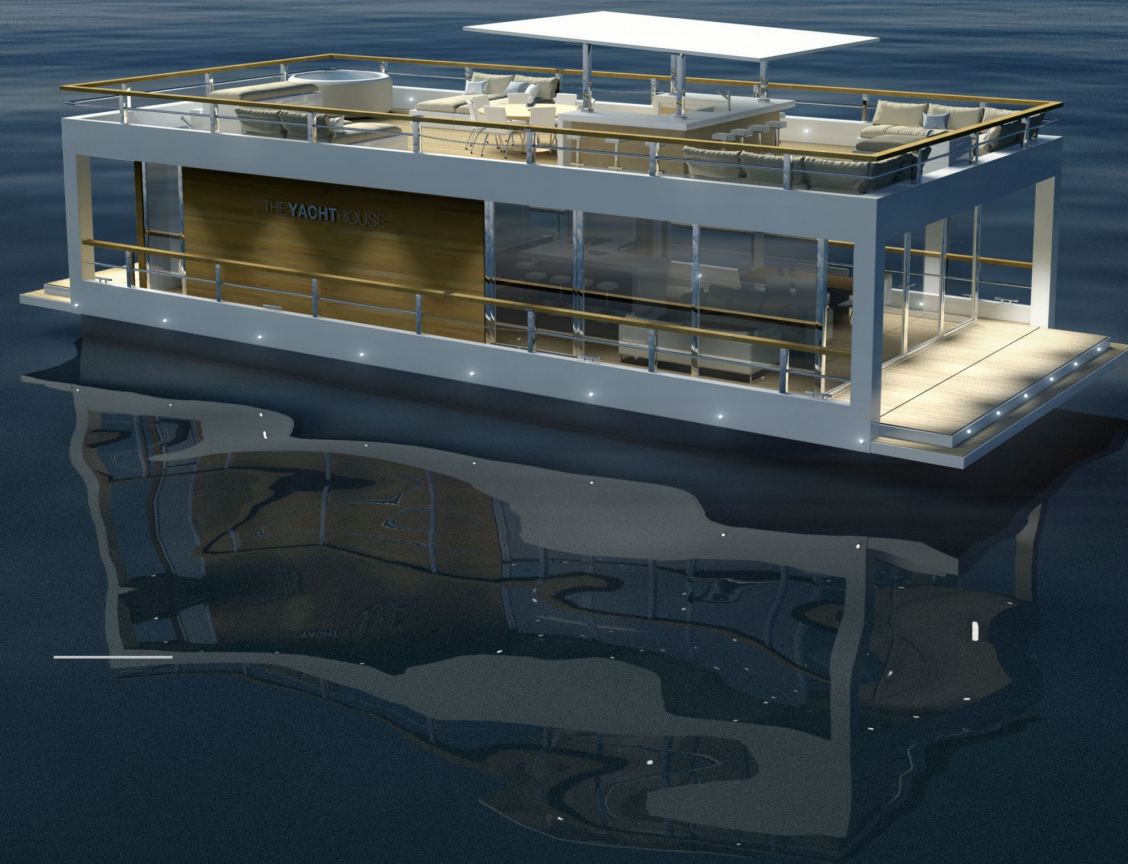
70 M<sup>2</sup>

SCANDINAVIAN DESIGN

FLYTENDE  
BOLIG



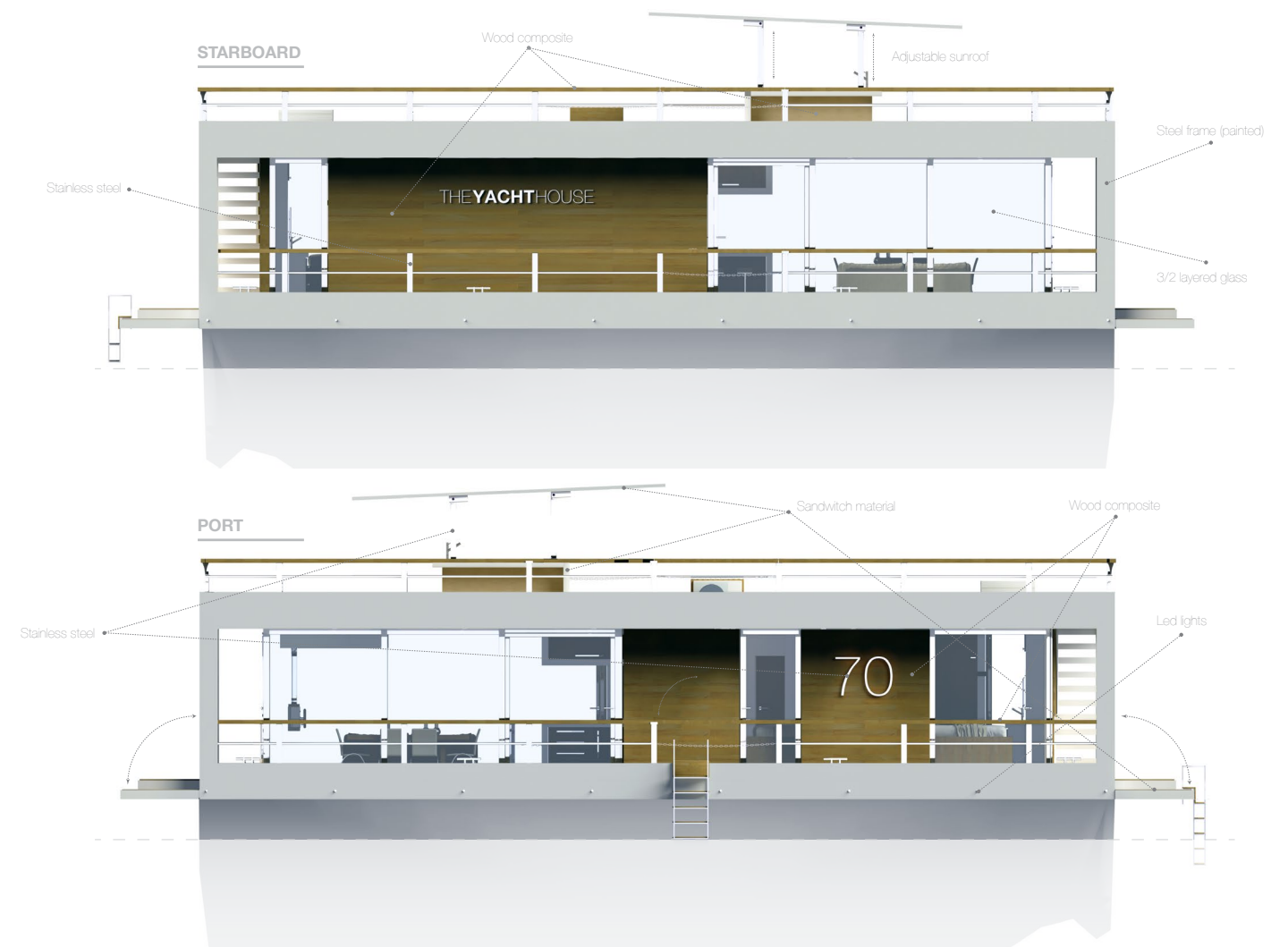
# THEYACHTHOUSE 70



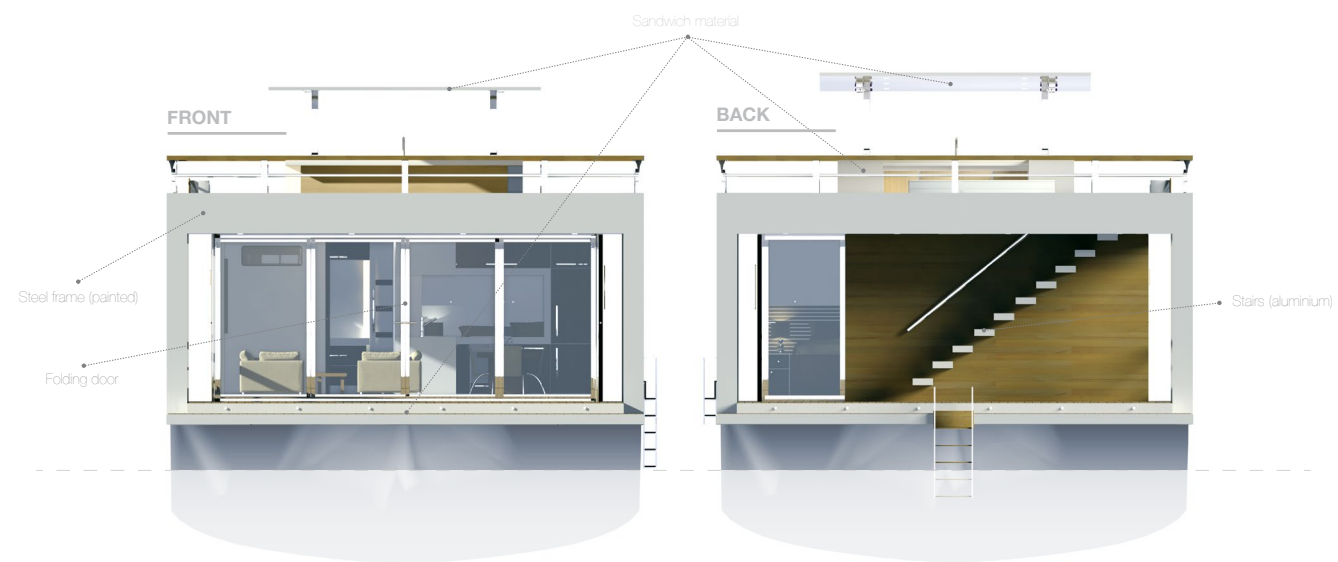
THIS COULD BE  
YOUR NEW HOME /BOAT/CABIN



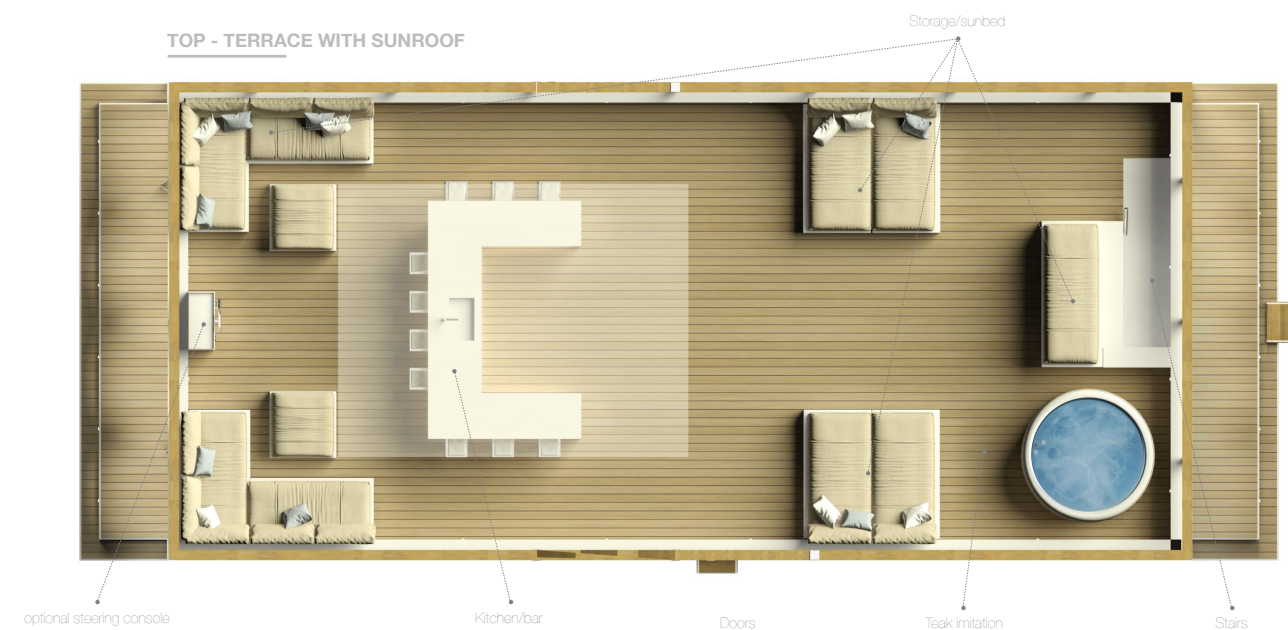
# THEYACHTHOUSE 70



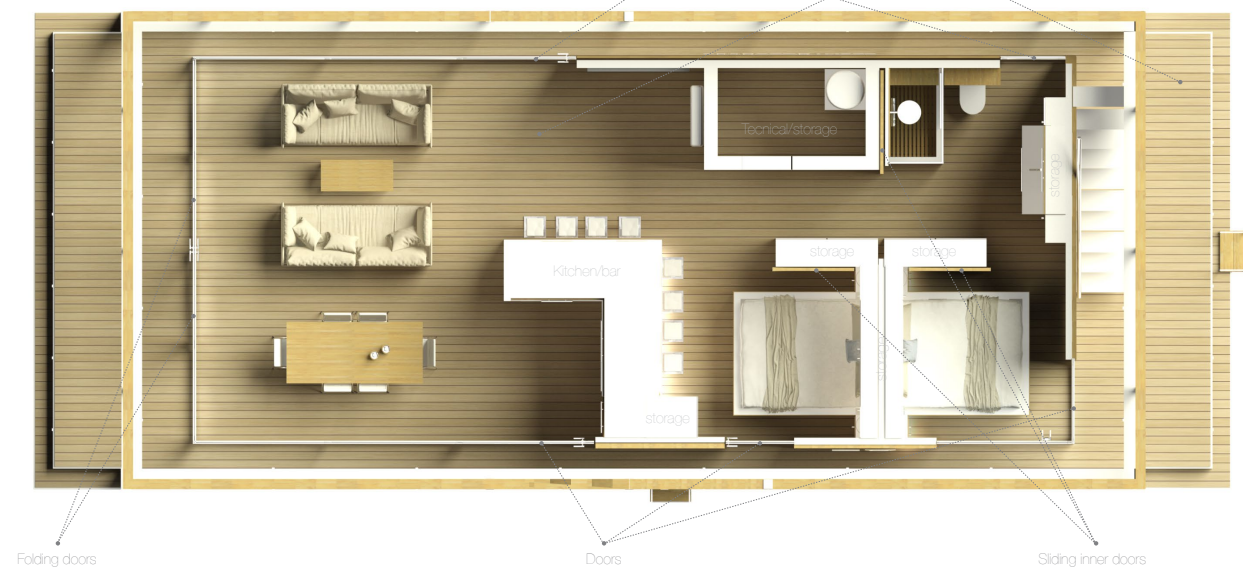




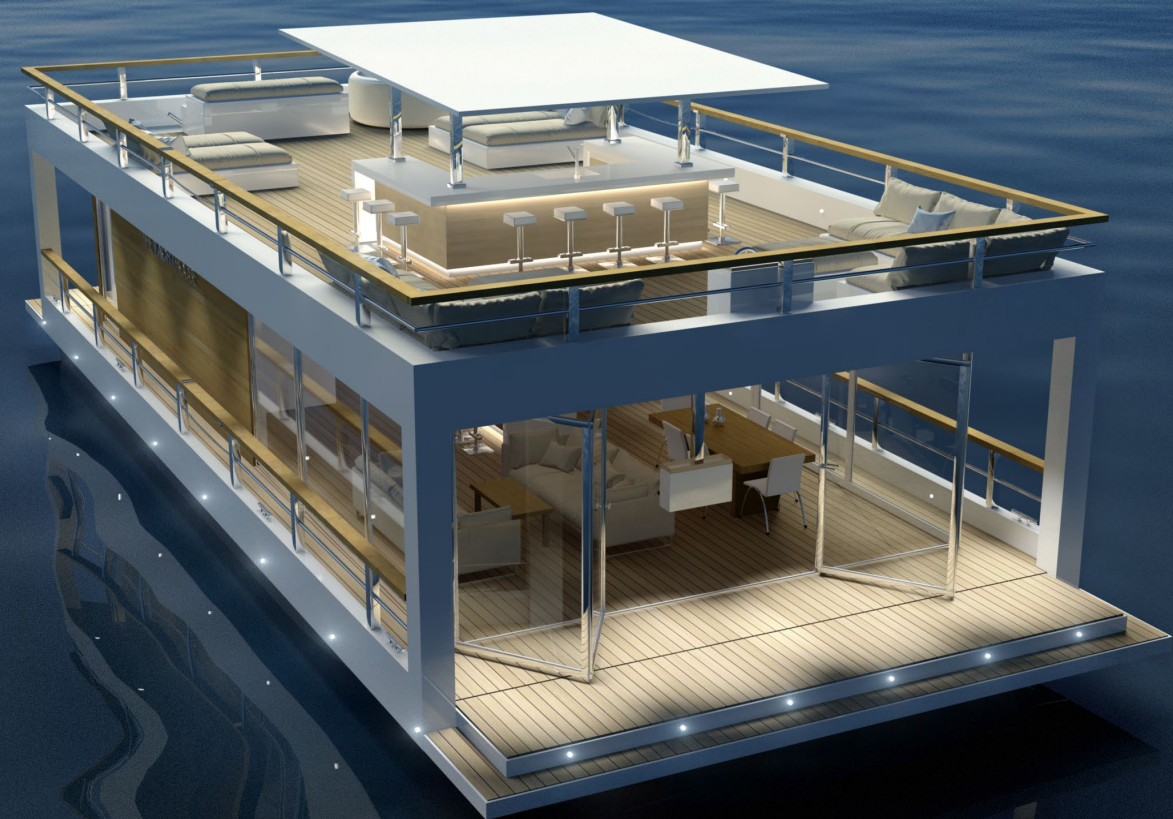
TOP - TERRACE WITH SUNROOF



TOP - FLOORPLAN



# THE YACHT HOUSE 70







# THE YACHT HOUSE 70

## KEY FIGURES

1	Length	14.95 m
2	Width	7 m
3	Air draft (Sunroof down / up)	3.9 / 5.0 m
4	Total combined floor area	206 m2
5	Enclosed ground-floor living area	70 m2
6	Combined terrace area	136 m2
7	Terrace (ground-floor)	46 m2
8	Terrace (roof-terrace)	90 m2
9	Bedrooms	2
10	Sleeps	6 people

## STANDARD FEATURES

	Price
1 Outer walls of steel with foam core. Waterproof and decorative in marine internal panels External decorative wood imitation panels.	Incl.
2 Solid and durable Ferro-Cement structure.	Incl.
3 Double-glazed, tinted windows with high-insulation. External colour of frame is white. Windows are framed on the outside with painted aluminium profiles. Sliding doors. Hinged doors. Folding door in front.	Incl.
4 Cladding of internal walls and ceiling in marine grade panels with surface treatment to create a seamless, high-quality finish (painted in your choice of colour).	Incl.
5 External cladding of walls in high-quality, maintenance-free, weatherproof and UV-stable composite panelling.	Incl.
6 Under-floor central heating: Waterborne floor heating throughout.	Incl.

## Available motor alternatives:



Inboard



Outboard



Electric

7	Flooring: Teak imitation floor panels indoor and outdoor ( main deck and sun deck) will create a uniform expression.	Incl.
8	Sliding internal doors in composite wood.	Incl.
9	Outdoor LED spotlights over walkway and terrace. Decorative LED-nodelights throuout the exterior.	Incl.
10	Railings in stainless steel and wood imitation.	Incl.
11	Aft and forward terraces to be fixed in lowered position as standard.	Incl.
12	Hidden gutters behind upper skirting with hidden drainpipes.	Incl.
13	Floor-level shower, with glass divider and washbasin.	Incl.
14	Modern and environmentally friendly toilet and sewage system with Sewage Treatment and suitable sewage tank.	Incl.
15	Two Shore power connections via stainless steel socket. 16 amp each.	Incl.
16	2000-litre drinking water tank in steel painted with paint approved for drinking water, including water pressure pump.	Incl.
17	500-litre grey water tank in steel with ball valve.	Incl.
18	Ventilation: Modern heat exchanger balanced ventilation system including hotwater tank.	Incl.
19	Staircase from ground-floor to roof terrace. Composite steps with anti skid.	Incl.
20	Lower walkway handrails in stainless steel and composite wood.	Incl.
21	Digital display panel for monitoring of all tanks (drinking water, diesel, sewage) and batteries (both house and starter battery).	Incl.
22	Comprehensive manual on the use and maintenance of your boat, including detailed instructions incl. 20-year warranty on structural integrity of hull and superstructure.	Incl.
23	Modern high quality kitchen including cooking plate, stove, fridge and dishwasher.	Incl.
24	Declaration of CE conformity as a pleasure boat for zone D (protected inland waters). This documentation is required for the registration and use of the boat within any European country.	Incl.
25	Additional <ul style="list-style-type: none"><li>- 2 Bilge pumps</li><li>- Fire Extinguishers</li><li>- 6 Bollards and fairleads</li><li>- Electrical Grounding Plate</li><li>- Permanent concrete ballast</li></ul>	

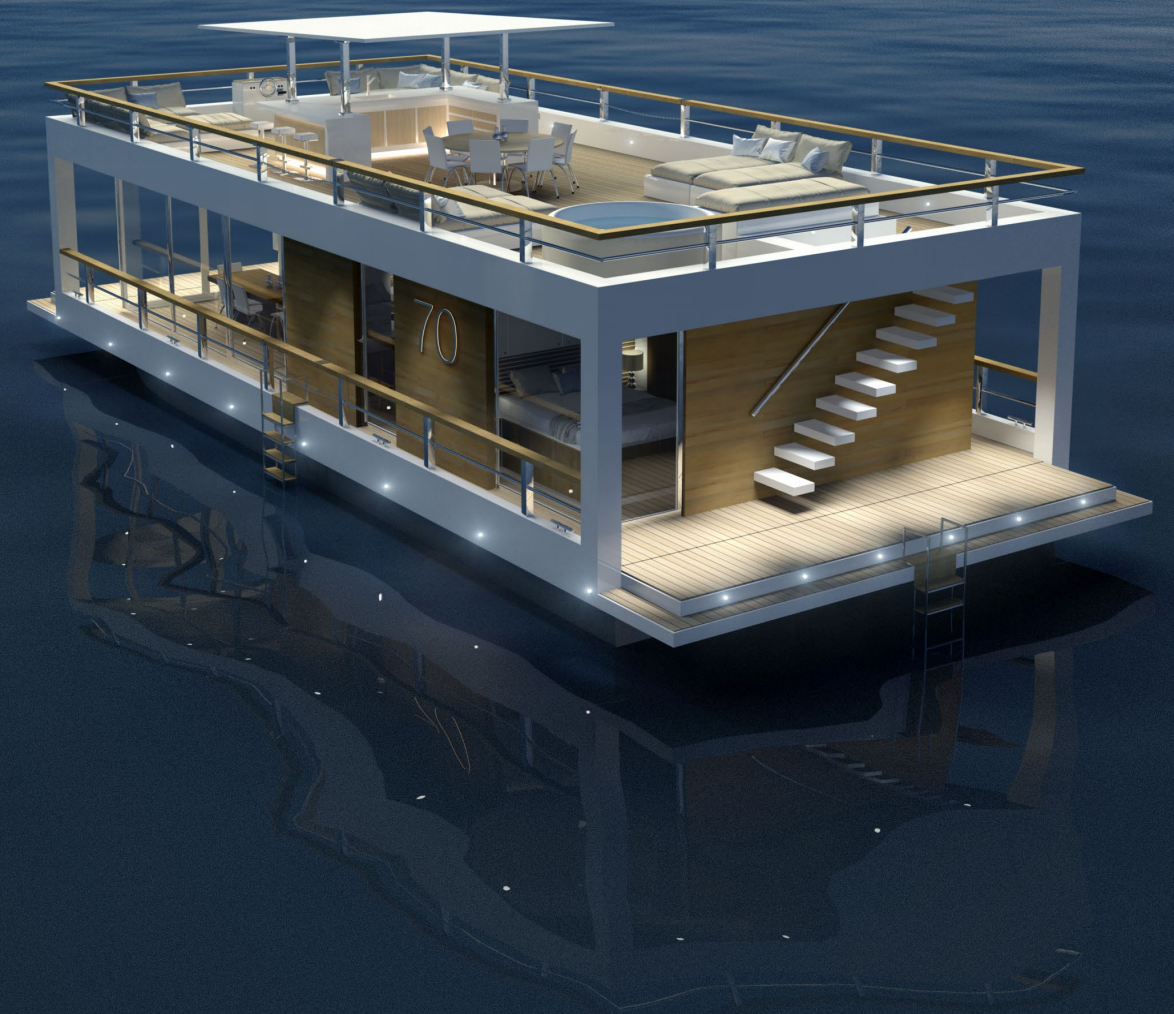
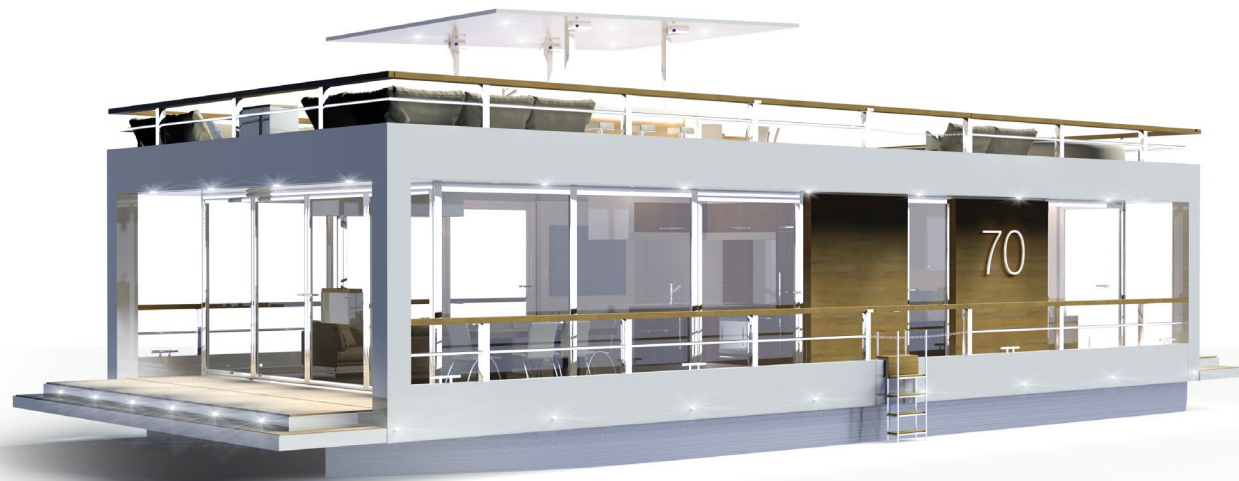
Price of standard features (excl. VAT)

298.000 EUR

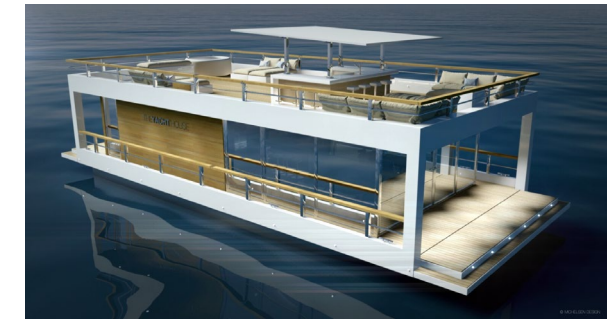
For motor specifications and options, see the pricelist.



# THE YACHT HOUSE 70



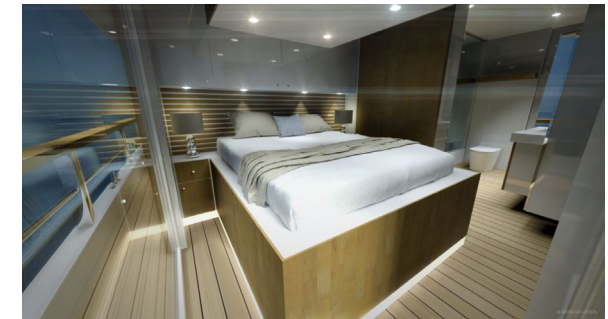




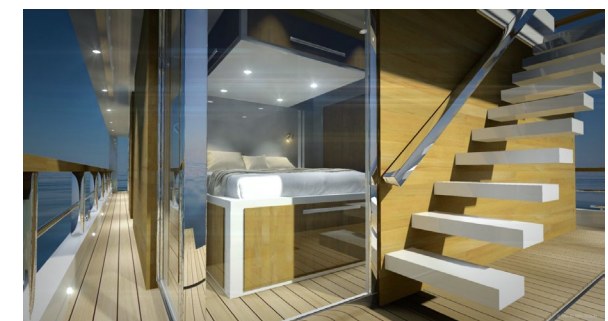




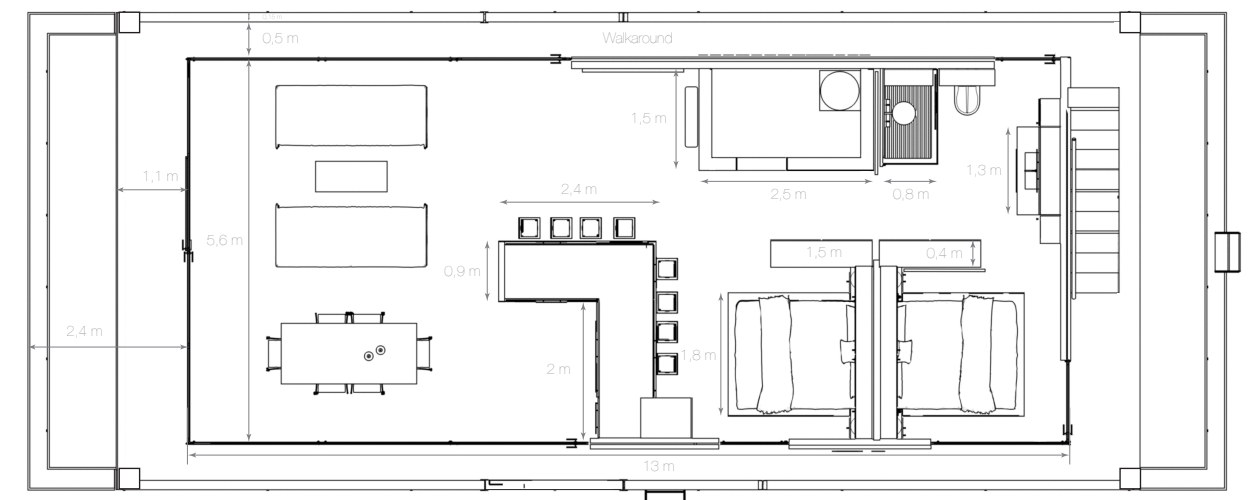
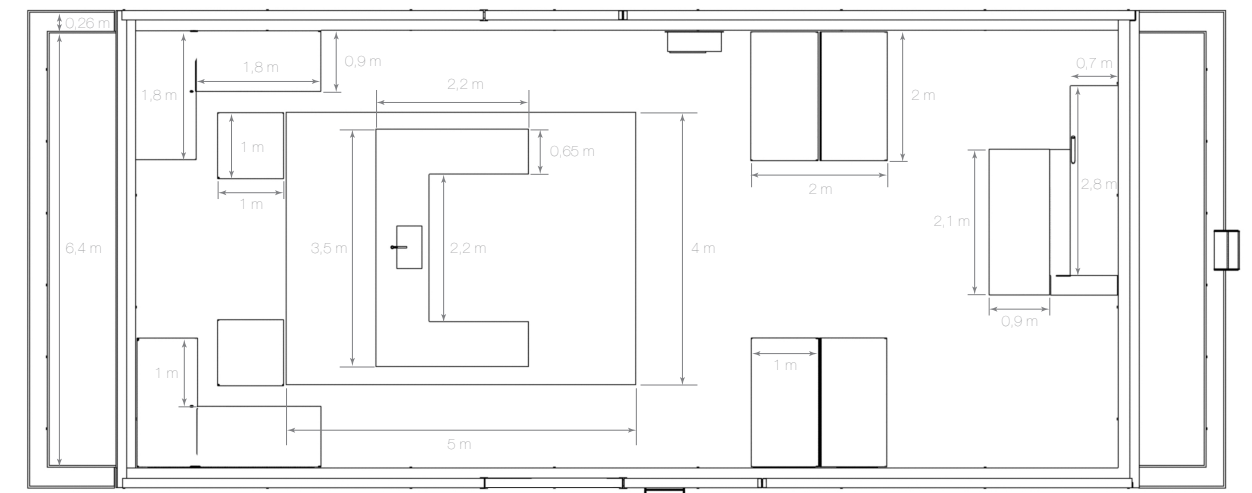
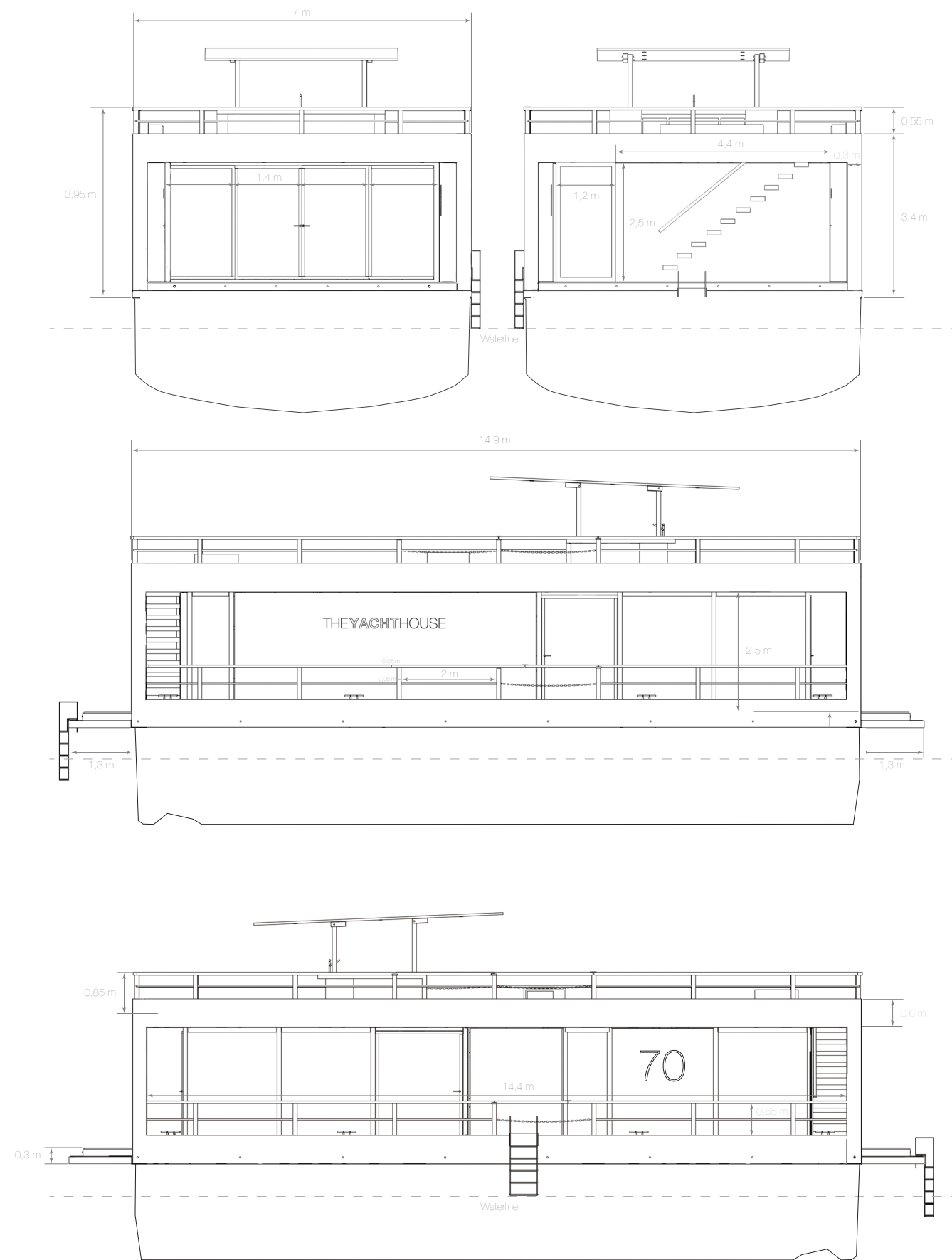












FLYTENDE  
BOLIG

